

## November 2021

President's Message .....	2
Notice of Amendments to St. Louis Section Constitution and Bylaws ....	3
Open Committee Positions .....	3
Impact of Coronavirus on ASCE Society-level Events - Updated October 2021 .....	3
ASCE President Dennis Truax Visits Student Chapters .....	4
ASCE St. Louis Section Annual Awards Dinner 2021 .....	7
Younger Member Group Update..	11
EWRI St. Louis Monthly Speaker Series.....	13
EWRI - St. Louis News .....	14
Envision Sustainability Professional (ENV SP) Training .....	16
University News .....	17
Employment Opportunities .....	19
Submit items to the newsletter...	30

### Upcoming Events

#### November

- 9 November Luncheon Meeting
- 17 YMG Mtg Happy Hour Francis Park
- 18 EWRI November Webinar

#### December

- 15 YMG Winter Social

Follow the Section and share with your  
network.



Update your bookmarks with our new  
Section website

<http://sections.asce.org/st-louis/>



## November Luncheon Meeting Tuesday, November 9, 2021

### America's Central Port District

**Abstract:** America's Central Port is one of Illinois's 19 public port districts within the state. For the past 20 years, it has been redeveloping a 1200-acre intermodal complex within its jurisdiction, including a former military base. Much of the infrastructure investment has been focused on transforming this World War II era base into a modern intermodal transportation asset for the St. Louis region. This discussion will highlight several of the projects that have taken place over the years and what is on tap for the next few which continue to build upon the region's transportation strengths and opportunities.

**Presenter:** **William S. Stahlman III, P.E., M.ASCE** - Director of Engineering and Construction, America's Central Port

**About the Presenter:** Mr. Stahlman is the Director of Engineering & Construction for America's Central Port with over 20 years combined experience in the construction and engineering field. He manages the construction and development within the Port including the 25+ miles of rail infrastructure. Additionally, he directs and manages the information technology networks that keeps the Port operating efficiently on a daily basis. He is engaged in a variety of local professional activities involving regional planning and infrastructure development. He also serves as the Chair for the Illinois Ports Association, is a member of the Board of Directors for the Illinois River Basin for Inland Rivers, Ports and Terminals Association (IRPT), Vice Chair of the COPRI Ports & Harbors Committee, Past Chair of Committee 18 (Light Density & Short Line Railways) for the American Railway Engineering and Maintenance-of-Way Association (AREMA), has served on ASCE's Committee for America's Infrastructure which publishes the Infrastructure Report Card for America every four years, and served as the Technical Director for the St. Louis Section of ASCE, as well as Practitioner Advisor for the Southern Illinois University Edwardsville's Student Chapter of ASCE.

**Time and Date:** 11:30am to 1:00pm, November 9, 2021. Registration starts at 11:30am and lunch is served at 11:45am. The program will begin promptly at 12:00pm. One (1) PDH available.

**Cost:** \$5 Virtual (Member)  
\$10 Virtual (Non-Member)

**Where:** Engineers' Club of St. Louis, 4359 Lindell Blvd., St. Louis, MO 63108  
*Virtual option available!!!*

**[Please click here to sign up!!!](#)**

## Officers & Directors 2021 - 2022

### President

John Weiland  
Wade Trim  
[jweiland@wadetrim.com](mailto:jweiland@wadetrim.com)

### President-Elect

Alison Graves  
Civil Design Inc  
[agraves@civildesigninc.com](mailto:agraves@civildesigninc.com)

### Vice President

Chris Toenjes  
Roeslein & Associates, Inc.  
[chr istoenjes@gmail.com](mailto:chr istoenjes@gmail.com)

### Secretary

Melantha Norton  
Nestle Purina PetCare Co.  
[diodonna@hotmail.com](mailto:diodonna@hotmail.com)

### Treasurer

Melissa Rettig  
Jacobs  
[Melissa.Rettig@jacobs.com](mailto:Melissa.Rettig@jacobs.com)

### Director of Technical Development

vacant

### Director of Administration

Shari Cunningham  
THD Design Group, Inc.  
[shari@thddesigngroup.com](mailto:shari@thddesigngroup.com)

### Director of Professional Development

Tony Roth  
Geotechnology, LLC  
[troth@geotechnology.com](mailto:troth@geotechnology.com)

### Past President

Jordan Pettibone  
Horner & Shifrin, Inc.  
[jepettibone.asce@gmail.com](mailto:jepettibone.asce@gmail.com)



## President's Message

Happy Fall, y'all! I'm not really from the South, but I just like this saying, and this is my favorite time of year! The leaves have finally turned, and the air is crisp, and the holiday season is right around the corner. We're off to an exciting start of our Fiscal Year, and there is much to look forward to. I hope you had the opportunity to join us at our Annual Dinner on October 15, either in person or virtually via Zoom. It was great to get together and recognize the achievements of our award winners and scholarship recipients, and to see each other once again. Highlights and photos from the

event are included in this newsletter. Our first monthly luncheon on October 28 was also conducted as a hybrid (in-person and virtual) event, with nearly the same number of in-person as virtual participants. Another luncheon presentation is coming up on November 9, which will again be a hybrid event. We hope that you as our members enjoy having the options of different ways to engage with other members.

While meeting in person provides the benefits of personal networking, we continue to remain aware of the need to maintain health and safety as a priority as the COVID pandemic persists. We continue to observe CDC and local and state guidance on masking and social distancing. Please refer to an article [below](#) in this newsletter regarding guidance from ASCE at the "Society" level on meetings and vaccination requirements. The St. Louis Section is not adopting ASCE "Society's" vaccination policy for our events (unless required by local, state, or venue policies), however please be aware of these requirements for "Society"-level events. Vaccination requirements in general are becoming more prevalent, however, and I would like to personally encourage members to consider COVID vaccination if you have not already.

This October, we were fortunate to be paid a visit by Dr. Dennis Truax, 2021-2022 President of ASCE to discuss "Engineering Our Future" with students and faculty from SIUC, SIUE, Missouri S&T, and SLU, as well as members of our Section and ASCE Region 7. Dr. Truax provided great insights into the many initiatives ASCE is undertaking to best position civil engineers as leaders into the future. As stated by ASCE, "Complex challenges facing 21st-century society require professional civil engineers to advance their technical excellence and leadership to continue to protect the public. Future civil engineers will need to master many new fields, such as sustainability, computer applications, advanced materials, nanotechnology, and the like." To learn more about ASCE's "Engineer Tomorrow" initiative, click [here](#).

Our Section has many opportunities to get involved in different ways. We are looking for a Communications Chair, with primary responsibility of producing the monthly newsletter. This is a great opportunity to learn about what's going on with the Section and to make personal contact. Other opportunities for committee involvement include Annual Dinner, Diversity and Inclusion, Pre-

College Outreach, and History and Heritage, to name a few. Feel free to reach out to me at [jweiland@wadetrim.com](mailto:jweiland@wadetrim.com) or 636-399-2588 if you're interested in getting involved in something new.

I'm looking forward to working with you!

John

---

## Notice of Amendments to St. Louis Section Constitution and Bylaws

The St. Louis Section Board of Directors is proposing several revisions to the St. Louis Section Constitution and Bylaws. In addition to providing notice, we want to explain some of the background on the proposed changes.

See *Summary of Proposed Constitution & Bylaws Revisions* on our website: [Constitution Markup](#) [Bylaws Markup](#)

**PLEASE NOTE that there was a system error in the survey sent out last month to vote for or against the proposed changes.**

This error caused the survey to stop taking votes after the first three days. Unfortunately, the survey tool does not allow the survey to be re-opened once it ends. We will send an invitation to the new survey a few days after this newsletter is posted. To reduce the risk of double counting votes we will not use the votes tallied in the original survey, so please cast you ballot for the new survey.

We apologize for the error.

## Open Committee Positions

**Communications Co-Chair** - The Committee's primary goal is to communicate to all local members news of past, present, and future activities and programs for the purpose of stimulating greater interest and participation in section affairs. The Co-Chair is expected to work closely with the president and chairmen of other committees to obtain information of vital interest to the membership. Correct and timely information should be obtained from the program committee regarding forthcoming meetings. Valuable news will also be found in the Section Leader, a regular publication issued from ASCE headquarters. An informal but regular system of contacts or reporters is an essential ingredient to the collection of interesting news.

---

## Impact of Coronavirus on ASCE Society-level Events - Updated October 2021

On October 21, 2021, ASCE "Society level" adopted a new policy requiring proof of full vaccination against COVID-19 for all attendees and staff at Society-level events, excepting those individuals with qualifying medical or religious exemptions. As stated in the memo, decisions requiring vaccination requirements for Section-level events are left to the discretion of local leadership based on factors specific to their events, including event size, level of community spread, and requirements recommended or imposed by state or local authorities, venues, or hosting entities. At this time, the ASCE St. Louis Section will not require proof of vaccination for in-person participation in meetings at a Section level, unless required by state or local authorities, venues, or hosting entities. We value the health and safety of all of our members, and will continue to follow CDC and local guidance on masking and social distancing for our meetings. Please visit the link below to view the policy (link includes the August 17 and October 21 memos): <https://sections.asce.org/st-louis/sites/sections.asce.org.st-louis/files/ASCE%20Meeting%20Vaccination%20Policy%20Guidance%2010-21-2021.pdf>

## ASCE President Dennis Truax Visits Student Chapters

### President Truax Meets with ASCE Student Chapter at Missouri University of Science and Technology

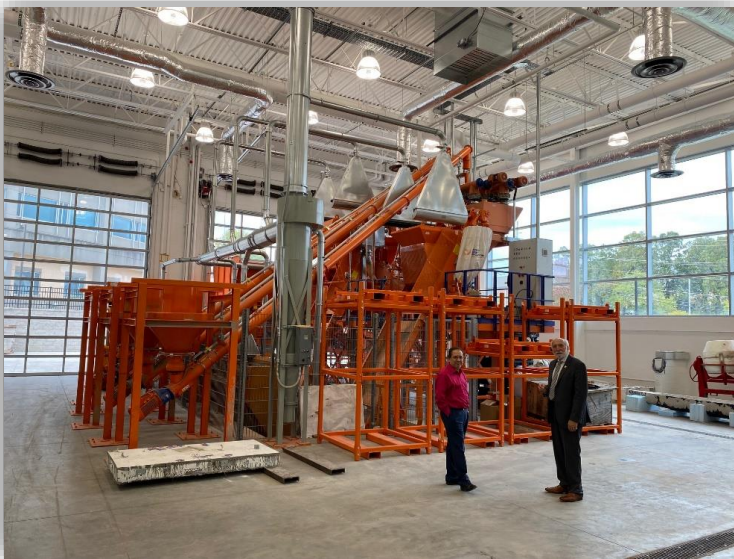
Dr. Dennis D. Truax, the 2022 president of the American Society of Civil Engineers (ASCE), presented a talk titled “Engineering Our Future” on Wednesday, Oct. 20. He discussed how ASCE envisions building a better infrastructure system using new methods and advanced materials to support a sustainable, inclusive and equitable society. He also joined the senior class in a panel with Region 7 Governor Shawna Erter, discussing professional service and leadership in organizations like ASCE.

The Civil, Architectural and Environmental Engineering department and the ASCE student chapter at Missouri S&T hosted the presentation and dinner before the talk, with a chance to discuss a variety of topics. The ASCE St. Louis Section sponsored the student dinner and reception, as well as production of the webinar. The talk is available online at: [https://youtu.be/yoeOua\\_3ypl](https://youtu.be/yoeOua_3ypl)

Dr. Truax was joined by fellow ASCE leaders: Chapter Advisors, Dr. Joel Burken and Dr. Kevin McLain; St. Louis Chapter President, John Weiland, and Region 7 Governor, Shawna Erter, along with several S&T student leader, including Presidents of AEI, WEF, AGC, AEG, and the student design teams for the Concrete Canoe and Steel Bridge. Leaders from campus organizations of National Society of Black Engineers (NSBE) and the Society of Hispanic Professional Engineers (SHPE) also joined the event. Dr. Truax also had the opportunity to tour the facilities at S&T and learn of the new initiatives as well as the 150<sup>th</sup> anniversary celebrations.

Truax was elected as an ASCE fellow in 1999 and fellow of the National Society of Professional Engineers in 2016. He is a chapter honor member of the Mississippi State University Chapter of Chi Epsilon. Truax received the 2020 Edmund Friedman Professional Recognition Award and the 2018 NCEES Distinguished Service Award. Recently, he was the 2020 ASCE Region 5 Wall of Fame Inductee and in 2021 was inducted into the Academy of Distinguished Alumni of the Charles E. Via, Jr. Department of Civil and Environmental Engineering at Virginia Tech.

Check out the video on this website to learn more about Truax and his background in the civil engineering profession: <http://www.asce.org/.../truax-installed-as-asce-2022...>



Dr. Truax and Dr. ElGawady tour the new Advanced Construction and Materials Lab addition to the Butler Carlton Civil Engineering Hall at Missouri S&T.



Student leaders with Dr. Truax for Dinner.





Student Chapter Officers and Chapter Advisors, Dr. Joel Burken and Dr. Kevin McLain; St. Louis Chapter President, John Weiland, and Region 7 Governor, Shawna Erter and Dr. Traux.



S&T Seniors after the Senior Seminar by Shawna Erter and Dr. Traux.

## ASCE 2022 President Luncheon with SIUE, SLU Student Leaders and ASCE St. Louis Section Members

At SLU on Oct. 21, we hosted a luncheon that included student members from SLU and SIUE and professional members from the ASCE St. Louis section. The speaker at this luncheon was Dr. Dennis Truax, President-Elect of ASCE. Dr. Truax is an emeritus professor at Mississippi State University. At this luncheon, Dr. Truax touched upon subjects that have impacted his time as a professional engineer and subjects that will impact young engineers far into the future. Before delivering his presentation, Dr. Truax met with student leaders from SLU and SIUE.



Some of his time speaking was spent recounting his past, like his unique experiences in Zambia with Engineers Without Borders. Dr. Truax used his experiences as a way of telling us to not simply accept “good enough” in life. Instead, we should take risks and set the bar high so we can reach high. That, of course, is inevitably going to include setbacks and failure. No road is ever perfect. But we should still embrace those challenges and roll with them, even if they don’t have the outcome that we want.

Dr. Truax’s presentation also included what the civil engineers of yesterday failed to do. That being, considering the people and environment being impacted by the projects that we help design and build. Although engineers may not be able to directly control what projects come to our desks, we can still be stewards of a better tomorrow. What’s happened in the past has happened, but we can learn from those mistakes and come up with creative ideas for challenging problems. One such example given by Dr. Truax is the High Line in New York City, which was turned into a greenway instead of being demolished.

Today, with factors such as climate change and a growing interest from the public in becoming more environmentally conscious, civil engineers must keep pace with the times and then some. Although we can look to the past for inspiration, we cannot assume what works now will work tomorrow. Instead, we must continually come up with new and fresh ideas to help connect the society of tomorrow.



Dr. Truax speaking with student leaders from SIUE and SLU. Student leaders, chapter advisors, ASCE Section VP, and Dr. Truax at Pere Marquette Gallery.

# ASCE St. Louis Section Annual Awards Dinner 2021

The 2021 Annual Awards Dinner was held on Friday, October 15 at the Engineers’ Club of St. Louis. Special thanks to Brandi Jones, the Annual Dinner Chair for a wonderful evening at an incredible venue! The event was recorded and can be found on our YouTube channel <https://youtu.be/pilgJvpZc8>.

## ASCE ST. LOUIS SECTION SCHOLARSHIPS

The ASCE St. Louis Section Annual Scholarships are awarded in recognition of membership in an ASCE Student Chapter, enrollment as a civil engineering student, excellence in academic performance, and active participation in issues reflecting the role of engineers in the advancement of our society. Each of the Section’s universities is solicited for nominations. The scholarship awards were presented by Past President Brent Vaughn.

*Meghan Stukel  
Saint Louis University*

*August Platt  
Southern Illinois  
University Edwardsville*

*Camdon Murphy  
University of Missouri-  
Columbia*

*Brenan Pool  
Missouri University of  
Science and Technology*



*\*Not Pictured – Scott Kasper, Southern Illinois University – Carbondale*

## 2021 MIKE ALIZADEH / GEOTECHNOLOGY SCHOLARSHIPS

The Mike Alizadeh scholarship is awarded due to a generous endowment by the Alizadeh family, in recognition of pursuing a masters degree in Civil or Geological Engineering with a geotechnical or environmental emphasis at a midwestern university. The scholarship awards were presented by President Jordan Pettibone.

*1<sup>st</sup> Place – Filippo Massobrio  
University of Illinois – Urbana Champaign*

*2<sup>nd</sup> Place – Fahim Hasan  
Missouri University of Science and Technology*





## **2021 SEI – ST. LOUIS CHAPTER STRUCTURAL ENGINEERING SCHOLARSHIP**

The St. Louis Chapter Structural Engineering scholarship is awarded in recognition of pursuing a masters degree in Civil or Structural Engineering with a structural emphasis at a midwestern university. The scholarship award was presented by Marc Bacchetti.

*Deidra Foster*

*Missouri University of Science and Technology*



---

## **PROFESSIONAL RECOGNITION AWARDS**

*2021 Professional Recognition Award Winner  
Randall Perkinson, P.E., P.Eng., F. ASCE*



The Professional Recognition Award recognizes the importance of professional attainment in the advancement of the science and profession of engineering and is presented to a Member of the St. Louis Section of ASCE who has made substantial contributions to the engineering profession and the St. Louis Section. This year's Professional Recognition Award goes to Randall Perkinson.



*2021 Young Engineer Award for Professional Achievement*

*Kandi Spraggs, P.E., M.ASCE*



The Young Engineer Award recognizes professional contributions of younger members to the Society and to the St. Louis Section and is presented annually to a Member of the St. Louis Section of ASCE who is judged to have attained significant professional achievement, and who is less than 35 years of age. This year's Professional Recognition Award goes to Kandi Spraggs.

*2021 Otto Nuttli Award*

*Ronald Brendel, P.E.*



The Otto Nuttli Award is presented to an individual who has made a significant contribution to the knowledge of earthquake engineering or the public awareness of the impacts of earthquakes on the public sector. This year's Otto Nuttli Award goes to Ronald Brendel.

## Installation of the 2021-2022 Officers



Pictured from left to right: Jordan Pettibone (Past President), John Weiland (President), Alison Graves (President Elect), Melissa Rettig (Treasurer), Christopher Toenjes (Vice President), and Tony Roth (Director of Professional Development). Not pictured: Melantha Norton (Secretary), William S. Stahlman III (Director of Technical Development), Shari Cunningham (Director of Administration)



President Jordan Pettibone passing on the gavel to President-Elect John Weiland

## Younger Member Group Update

### November Meeting

Join us for our November meeting in Francis Park!

Wednesday, November 17, 2021

5:30-6:30 PM

Francis Park - Rockwell Beer Garden

### YEC/ASCE Kickball Tournament

Thank you to all who volunteered, attended, and sponsored the 6<sup>th</sup> Annual Kickball Tournament! We had a great time and are already looking forward to next year.

Congratulations to this year's winner: MSD/TWM/CDI!



CBB/GBA Team



Horner & Shifrin Team



Lochmueller/Roeslein Team

*See the following page to get our full list of meetings this year!*

Contact Michelle Bresnahan, YMG Chair, at [MBresnahan@lochgroup.com](mailto:MBresnahan@lochgroup.com) if you would like to be added to the email list or if you have any questions or comments regarding the YMG Update.



# YMG 2021 Calendar

Join us for a monthly happy hour! Rather than the typical bar, we'll be taking a tour around different parks this year. The exact location will be sent the month before. In the event of inclement weather, the happy hour will be canceled.

\*Subject to change throughout the year

<b>September YMG Meeting</b>	<b>October YMG Meeting</b>
Wednesday, September 15, 2021	Wednesday, October 13, 2021
Summer BBQ in Lafayette Sq	Happy Hour in Tower Grove Park
Meet at The Park House	Lily Pond Shelter
5:30-7:30pm	5:30-6:30pm
<a href="http://lafayettepark.org/walking-tour-park-house/">http://lafayettepark.org/walking-tour-park-house/</a>	<a href="https://www.towergrovepark.org/lily-pond-shelter">https://www.towergrovepark.org/lily-pond-shelter</a>
<b>November YMG Meeting</b>	<b>December YMG Meeting</b>
<b>Wednesday, November 17, 2021</b>	Wednesday, December 15, 2021
<b>Happy Hour in Francis Park</b>	Winter Social
<b>Rockwell Beer Garden</b>	Location TBD
<b>5:30-6:30pm</b>	5:30-6:30pm
<b>5300 Donovan Ave, St. Louis, MO 63109</b>	



## EWRI St. Louis News

### EWRI ST. LOUIS MONTHLY SPEAKER SERIES EVENT

The St. Louis Section of EWRI is pleased to announce our monthly webinar **on Thursday, November 18, 2021 from 11:30 am-12:30 pm Central Time.**

This presentation will be broadcast live over a webinar. Registration is free to ASCE members. **Advance registration is required by noon, Monday, November 15, 2021.** Please register online at the following link:

[EWRI November 2021 Speaker Series Presentation](#)

Registrants will receive detailed login and dial-in information prior to the event.

#### **IP APPROACH: SUSTAINABLE RETURN ON INVESTMENT**

The City of Springfield, MO was 1 of 13 cities nationwide recently recognized by the US Environmental Protection Agency in a report to Congress as using an integrated planning (IP) approach to address various regulatory needs to protect the environment. The IP approach helps the City find the most effective solutions that prioritize the community's environmental needs in a way that is affordable to its citizens.

Saki Urushidani will be presenting about one component of the IP which looks at the sustainable return on investment (SROI) of various projects and programs that could be implemented as part of the IP. The SROI approach differs from the traditional cost-benefit analysis and monetizes the social and environmental benefits of the various projects and programs. Past studies have looked at projects related to the sanitary sewer collection system, wastewater treatment plant, and various stormwater quality efforts. The presentation will detail the SROI process and how the City of Springfield has used the results to drive their decision-making.

#### **SPEAKER**

##### ***Saki Urushidani, PE, ENV SP***

Saki Urushidani graduated from Missouri University of Science and Technology in 2016 with a degree in environmental engineering. She is a licensed professional engineer who works for the City of Springfield, Missouri in the Environmental Services Department. An H&H modeler, Saki assists with MS4 permit compliance and various aspects of the Springfield-Greene County integrated plan for the environment.

Saki is currently a corresponding member of ASCE's MOSAIC - Members of Society Advancing an Inclusive Culture. She is also the co-chair for the Missouri Water Environment Association's Young Professionals Committee as well as the Committee for Diversity, Equity and Inclusion.

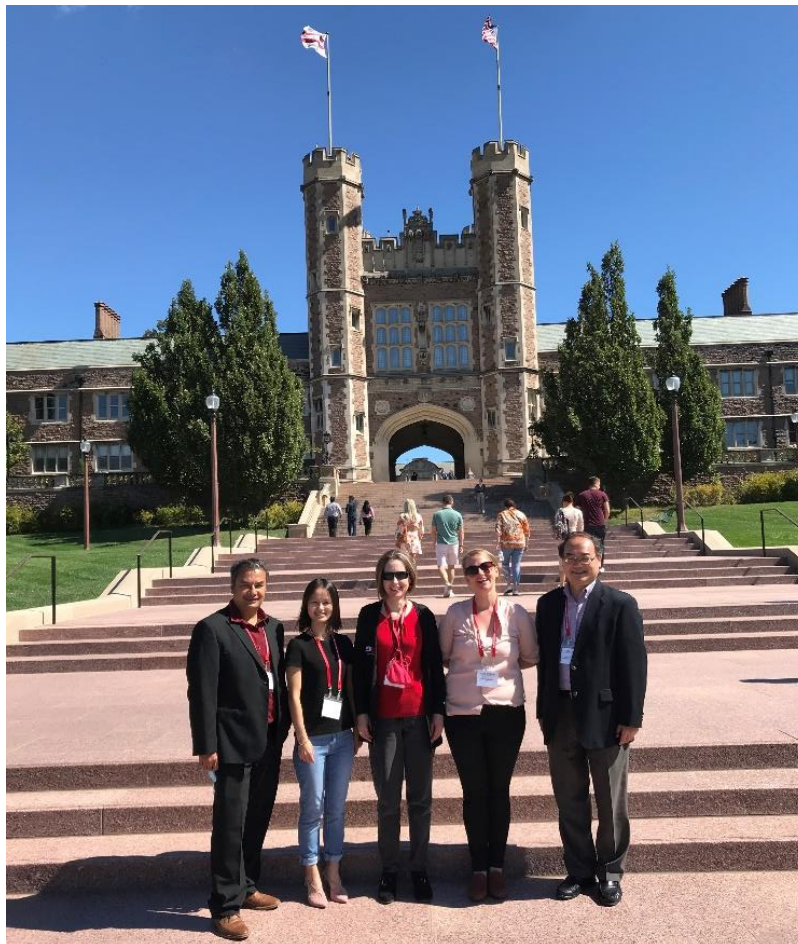
Thank you to our joint seminar sponsor, **EDM Incorporated!**

Please contact **Rohan Benjankar, PhD** ([rbenjan@siue.edu](mailto:rbenjan@siue.edu)) with any questions, if you are interested in presenting, or have an idea for a topic.



**EWRI St. Louis Leadership Team:** through rotation and election, the EWRI St. Louis Chapter formed a new leadership team at the September 21, 2021 meeting for a two-year term 2021-2023, which consists of:

- Chair: Meg Zuercher, CFM; Jacobs Inc.
- Vice Chair: Open
- Secretary/Treasurer: Jiaman Xu, PE, ENV SP; Civil Design, Inc.
- Past Chairs:
  - Dr. Jianpeng (Jim) Zhou, P.E., BCEE, F.EWRI; Southern Illinois University Edwardsville
  - Dr. Robert Holmes, P.E., D.WRE, F.EWRI; F.ASCE, US Geological Survey
  - Elise Ibendahl, P.E., PMP, F.ASCE, CFM; Jacobs Inc.
  - Michael Buechter, P.E., D.WRE.; Metro. St. Louis Sewer District
- Spring Symposium and Workshop Chair: Dr. Azadeh Akhavan Bloorchian; Stantec Inc.
- Webinar Chair: Dr. Rohan Benjankar, Ph.D.; Southern Illinois University Edwardsville



(Left to Right): Rohan Benjankar (Webinar Chair), Jiaman Xu (Secretary/Treasurer), Susan Morgan, Meg Zuercher (Chair) and Jim Zhou (Past Chair) at Washington University

**EWRI St. Louis Student Engagement:** To support students and enhance engagement with universities, the EWRI Chapter sponsored the annual *Mid-American Environmental Engineering Conference* series. This student conference was held



September 25<sup>th</sup> at Washington University. It was attended by students and their faculty advisors from six universities in the region: *University of Missouri Columbia, Missouri University of Science and Technology, Washington University in St. Louis, Southern Illinois University Edwardsville, Southern Illinois University Carbondale, and Saint Louis University*. The conference had 78 participants, 28 great student presentations, and an inspiring keynote presentation from Dr. Vern Snoeyink on lead contamination in drinking water. Four students were presented with best presentation awards, funded by EWRI.



**Congratulations to the best presentation awardees at the 2021 MAEEC Conference!**

From left to right: Anushka Mishra (Washington University in St. Louis), Rahamat Ullah Tanvir (University of Missouri), Jianpeng (Jim) Zhou (EWRI representative and Southern Illinois University, Edwardsville), Dan Giammar (MAEEC Chair and Washington University in St. Louis), Kapiamba Fabrice (Missouri University of Science & Technology) and Khalid Mustafa (Southern Illinois University, Carbondale)



**Group photo of MAEEC participants, held at Washington University on September 25<sup>th</sup>**

**Professional Development Activities:** in addition to webinars, the EWRI Chapter continues to offer annual symposium/workshop. The next event is planned for Spring 2022. We want to hear your inputs. Please contact Azadeh [azadeh.bloorchian@stantec.com](mailto:azadeh.bloorchian@stantec.com) with suggestions.

To get more involved with our EWRI Chapter, such as to volunteer for webinar and seminar/workshop planning committees, please contact Meg Zuercher ([meg.zuercher@jacobs.com](mailto:meg.zuercher@jacobs.com)) or the committee chairs.

You can learn more about Chapter’s activities at LinkedIn page

[https://www.linkedin.com/company/environmental-and-water-resources-institute-st-louis-chapter?trk=similar-pages\\_result-card\\_full-click](https://www.linkedin.com/company/environmental-and-water-resources-institute-st-louis-chapter?trk=similar-pages_result-card_full-click)

# Envision Sustainability Professional (ENV SP) Training

## Envision Sustainability Professional (ENV SP) Training Course

**November 8-9, 2021/11:30 a.m.-3:30 p.m. ET**

**Price: \$600M/\$800NM**

ASCE is proud to offer the ISI Envision Sustainability Professional (ENV SP) credentialing training course at a discounted rate for ASCE members this fall. The purpose of ENV SP training is to equip you to use Envision, a tool that provides a consistent, consensus-based framework for assessing sustainability, resiliency, and equity in civil infrastructure.



*Upon completion of this course, you will be able to:*

- Demonstrate how infrastructure can address the challenges inherent to sustainable development
- Describe the components of Envision
- Evaluate the sustainability of infrastructure projects using the Envision framework
- Describe the Envision verification process
- Use Envision to plan, design, and deliver more sustainable infrastructure



ENVISION™

*Your registration fee includes the cost of the ENV SP exam.*

**[go.asce.org/ENVSP](https://go.asce.org/ENVSP)**

## Envision Sustainability Professional (ENV SP) Credentialing Workshop



Presented by  
**Michael F. Bloom, PE,  
ENV SP, CFM, BCEE**  
R. G. Miller Engineers, Inc.



Live Virtual  
November 8 and 9, 2021  
11:00 AM to 3:30 PM ET  
Both Days

Member \$600  
Non-Member \$800

Scan QR Code to Register



ENVISION

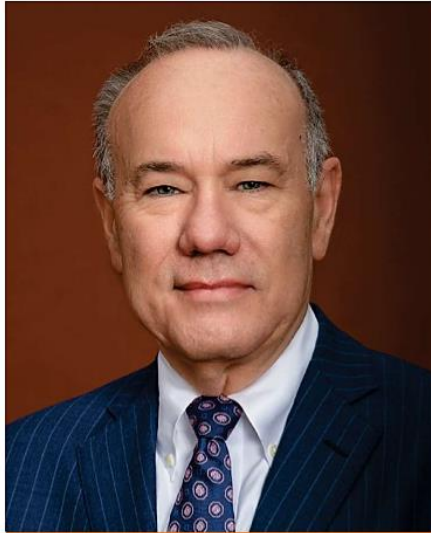


Institute for  
Sustainable  
Infrastructure

**ASCE**

AMERICAN SOCIETY OF CIVIL ENGINEERS





**JONES** Distinguished Lecturer

**Randall Poston**, Ph.D., P.E., S.E.

- National Academy of Engineering Member
- American Concrete Institute (ACI) President
- Neil Armstrong Distinguished Visiting Fellow, Purdue University College of Engineering
- Founding Senior Principal of Pivot Engineers, Consulting Firm, Austin, Texas

**1:30 p.m. | Thursday, Dec. 2**  
Room 125, Butler-Carlton Hall

Reception to follow.  
Sponsored by ACI  
Missouri Chapter



MISSOURI  
**S&T**  
cies.mst.edu



# Best of times. Worst of times.



## Evaluation and Repair of Concrete Buildings: The Tale of Two High-Profile Projects

**Live webinar:** [umsystem.zoom.us/j/92489242927](https://umsystem.zoom.us/j/92489242927)

**Abstract:** The repair of concrete structures presents unique construction challenges compared to new construction. These include the fact that there are often variations in the as-constructed details compared to those shown in design and construction drawings. Moreover, for buildings that have been in service for some time, the aging and deterioration of components can make construction more difficult especially if the building must remain in service during repairs.

To describe some of these challenges, this presentation will focus on the evaluation and repair of two high-profile concrete buildings — the Courthouse Square mid-rise building complex in Salem, Oregon, and the Austonian high-rise residential tower in Austin, Texas. The presentation will discuss the nature of design and construction defects that were uncovered during investigation, the types of concrete deterioration that had been experienced during service, and the types of repair and strengthening schemes that were utilized to bring the buildings into compliance with building codes.

**Biography:** **Randall W. Poston**, Ph.D., P.E., S.E., is a structural engineer and the founding senior principal of the consulting engineering firm Pivot Engineers in Austin, TX. He is currently the president of ACI, and is a Neil Armstrong Distinguished Visiting Fellow at Purdue University College of Engineering.

Poston received his bachelor's, master's and doctoral degrees in civil engineering from the University of Texas at Austin in 1978, 1980 and 1984, respectively. Poston was elected to the National Academy of Engineering in 2017.

From 2006 to 2014, he chaired the American Concrete Institute (ACI) Committee 318, which was responsible for the first comprehensive reorganization of building code for structural concrete in 45 years. For his work leading the effort, ENR named him a Top 25 Newsmaker in 2015, and ACI recognized Poston with the 2014 ACI Henry L. Kennedy Award and the 2015 Delmar Bloem Distinguished Service Award.

Sponsored by:  
**Center for Infrastructure Engineering Studies (CIES)**  
**Civil, Architectural and Environmental Engineering (CArEE)**  
**College of Engineering and Computing (CEC)**



## VIRTUAL FALL 2021 FE REVIEW SESSIONS AT SIUE\*

<u>Date</u>	<u>Subject</u>	<u>Instructor</u>	<u>Time</u>	<u>Place</u>
Tues. 10/05/21	<b>Surveying/Construction</b>	Prof. Sherrill	4:30—5:50 PM	Recorded Video
Thurs. 10/07/21	<b>Statics/Math</b>	Dr. Chew	4:30—5:50 PM	Recorded Video
Thurs. 10/14/21	<b>Statics</b>	Dr. Fries	4:30—5:50 PM	Zoom
Tues. 10/19/21	<b>Dynamics</b>	Dr. Shavezipur	4:30—5:50 PM	Zoom
Thurs. 10/21/21	<b>Mechanics of Solids</b>	Dr. Panahshahi	4:30—5:50 PM	Zoom
Wed. 10/27/21	<b>Fluid Mechanics</b>	Dr. Denn	4:30—5:50 PM	Zoom
Thurs. 10/28/21	<b>Engineering Economics</b>	Dr. Eneye	4:30—5:50 PM	Zoom
Tues. 11/02/21	<b>Geotechnical Engineering</b>	Dr. Ocouli	4:30 – 5:50 PM	Zoom
Thurs. 11/04/21	<b>Environmental Engineering</b>	Dr. Zhou	4:30 – 5:50 PM	Zoom
Tues. 11/09/21	<b>Transportation Engineering</b>	Dr. Qi	4:30 – 5:50 PM	Zoom
Thurs. 11/11/21	<b>Structural Design: Concrete</b>	Dr. Panahshahi	4:30 – 5:50 PM	Zoom
Tues. 11/16/21	<b>Engineering Materials</b>	Dr. Huang	4:30 – 5:50 PM	Zoom
Thurs. 11/18/21	<b>Hydraulic/Hydrologic Systems</b>	Dr. Benjankar	4:30 – 5:50 PM	Zoom

\* ALL REVIEW SESSIONS ARE TAUGHT BY SIUE FACULTY MEMBERS. THE SESSIONS ARE FREE FOR SIUE ENGINEERING STUDENTS WHERE EMAILS WITH THE ZOOM LINKS FOR THE SESSIONS WILL BE EMAILED TO THEM. NO REGISTRATION IS NEEDED. FOR NON-SIUE STUDENTS AND PRACTICING ENGINEERS, EACH SESSION WILL COST \$10 PAYABLE TO SIUE CHI EPSILON. TO REGISTER AND OBTAIN THE ZOOM MEETING INFORMATION FOR THE SESSIONS(S) YOU ARE INTERESTED IN ATTENDING PLEASE CONTACT MS. ASHLEY SPAIN, CHI EPSILON PRESIDENT AT [ASPAIN@SIUE.EDU](mailto:ASPAIN@SIUE.EDU), AT LEAST 24 HOURS IN ADVANCE. AN INVOICE WILL BE SENT TO YOU ONCE THE SESSIONS ARE COMPLETE. FOR MORE INFORMATION PLEASE CONTACT PROF. PANAHSHAHI AT [NPAHAHS@SIUE.EDU](mailto:NPAHAHS@SIUE.EDU)

SOUTHERN ILLINOIS UNIVERSITY  
**EDWARDSVILLE**

## Employment Opportunities



At DMA, we engineer the foundations of communities. Our business is to create and preserve the Nation's infrastructure. We design and assess highways and bridges, buildings, sewers and tunnels, and electric and gas networks used by millions of Americans every day. We work on iconic projects – international airports, national monuments, universities, hospitals and medical campuses, sports stadiums, and so much more.

Our family-first and hard-working culture stretches far beyond the name of Mason. We believe everyone works together, an "all oars in the water" approach to help everyone succeed. Our team members are like extended family and we collaborate to serve our customers with integrity.

**We are energized by the challenge and inspired by our people.**

### CURRENT OPENINGS (St. Louis Office)

Benefits package includes health, dental, life, long-term disability, and long-term care insurances, 401k, holidays, PTO and every other Friday OFF.

**STRUCTURAL PROJECT MANAGER** - Minimum 10 years of experience; Licensed PE or SE; Bentley RAM Modules, RISA 3-D and L-Pile. Knowledge with using AutoCAD and REVIT is a plus.

**STAFF STRUCTURAL ENGINEER** - Minimum 5-8 years of experience; RISA, RAM, L-Pile, AutoCad software is required. REVIT experience is a plus.

**CIVIL STAFF ENGINEER** - Minimum 2 years of experience; AutoCAD-Civil3D and exposure to engineering modeling software such as HEC-HMS, HEC-RAS, preferred; requires an Engineering Intern (EI) Certification with intentions of pursuing and obtaining a Professional Engineering (PE) License.

**CIVIL ENGINEERING CAD DESIGNER** - Minimum 5-8 years of experience; AutoCAD / with a focus on civil engineering design. Experience should include site layout, grading, drainage and utility design projects. Civil 3D experience preferred. A working knowledge of Microstation is a plus.

**DRAFTER/DESIGNER – ELECTRICAL UTILITY** - Minimum 5-10 years of experience; knowledge of Bluebeam and a proficiency for Bentley MicroStation, AutoCAD, and/or comparable applications; working knowledge in utility, transmission, and power distribution applications, associated with the design modification of schematic, wiring and interconnect diagrams.

For all career opportunities at DMA, and to apply, visit: [davidmason.com/careers](http://davidmason.com/careers)

 Health	 Dental	 Life	 Long-Term Disability	 Long-Term Care	 401(k) Option
 Great Culture + Team	 Professional Growth Opportunities	 Family Environment	 Every Other Friday Off	 Equal Opportunity Employer	

St. Louis | Chicago | Philadelphia

[davidmason.com](http://davidmason.com)

## Structural and Geotechnical Engineering Faculty Positions



The Department of Civil Engineering at Southern Illinois University Edwardsville is seeking to fill two tenure track positions in Civil Engineering at the Assistant Professor level to begin August 16<sup>th</sup>, 2022. One position is available in structural engineering and one position is available in geotechnical engineering. The successful candidates must have the ability to 1) teach undergraduate and graduate courses in civil engineering, 2) advise graduate students (MS and PhD), 3) establish and sustain an externally funded research program, and 4) participate in service activities.

The structural engineering candidate should have expertise in steel design. The successful candidate can teach courses in structural analysis/design, advanced steel design, structural dynamics, and finite element analysis. Preference will be given to candidates with expertise in structural design with multiple materials, multi-hazard resistant design, health monitoring, and laboratory instruction. Full information about this position is available at <https://www.siu.edu/employment/engineering/FY22-027.shtml>.

The targeted areas of interest for the geotechnical engineering position include, but are not limited to soil-structure interaction, in situ geotechnical testing, geo-hazard assessment and risk mitigation for resilient infrastructure, geo-construction, laboratory physical modeling of geotechnical systems, and earthquake engineering. Preference will be given to candidates with expertise in teaching geotechnical lecture and lab courses and have the ability to develop new courses to supplement our curriculum. Full information about this position is available at <https://www.siu.edu/employment/engineering/FY22-033.shtml>

A background allowing candidates to work with existing civil engineering faculty, including across sub-disciplines is an asset. Candidates should have an educational background that would permit licensure as a professional engineer or structural engineer, must hold at least one degree in civil engineering, possess an earned doctoral degree or ABD (all but dissertation) in civil engineering or a closely related field. Candidates for this position will be expected to be student-centered and should embrace the Teacher-Scholar model, demonstrate a commitment to promoting experiential learning, and advance civil engineering through research. Information about the department can be found at [www.siu.edu/engineering/civil-engineering/](http://www.siu.edu/engineering/civil-engineering/).

Closing date for applications 11/30/2021.

Diversity, equity, and inclusion are core values of SIUE and reflected in the institutional commitment to Inclusive Excellence here <https://www.siu.edu/provost/inclusive-excellence/>. The School of Engineering is committed to attracting, supporting, and retaining employees with varying identities and backgrounds, particularly candidates from underrepresented groups in STEM such as women faculty and faculty of color. SIUE faculty are encouraged to contribute to inclusive excellence in both the academic community and region through research, teaching, and service.



## **Illinois Civil Engineering Leader**

Champaign, IL; Springfield, IL; Belleville, IL

Bacon Farmer Workman (BFW) seeks an engineering leader who can oversee the civil engineering discipline for the company in the state of Illinois. This is an opportunity for an up-and-coming professional engineer with a background in large-scale commercial, municipal, or institutional land development and/or water-wastewater to position themselves as the statewide civil engineering leader for growth in a terrific, fast-growing company. The position will involve business development and strategy to position the civil engineering division of the company for continued strategic success in Illinois. The engineer will also be responsible for project management, quality control, mentoring, and high-level supervision of design and technical staff across several offices. This division of the company focuses on clients that require the highest level of professionalism and quality, and offers the opportunity for the right individual to build significant, large-scale projects that leave a standing legacy for the communities they serve. The right individual will have experience serving as a project manager for complex projects as well as some leadership or management experience and the desire to build upon strong relationships in the Illinois region.

BFW believes in empowering their employees to truly shine. The individual will be given the flexibility and autonomy to grow and thrive in this prestigious position. BFW offers a supportive, fun, and caring work environment with projects that are generally regional and don't require long-distance travel. This is a great opportunity for someone looking to be a leading local civil discipline expert and remain engaged in their family and community!

### About the Company:

*Founded in 1996, Bacon Farmer Workman Engineering & Testing, Inc (BFW) is a firm of 120+ team members providing professional engineering services. The Bacon Farmer Workman & Marcum Engineering family of companies are committed to providing engineering excellence through planning, design, & construction observation phase services for Civil, Structural, Transportation, Geotechnical, Mechanical, and Electrical projects. BFW is a regional firm with staff located throughout Kentucky, Illinois, Missouri, and Tennessee. BFW's commitment to the communities and environments they work in is the hallmark of their success. How they work starts with who they are. BFW's culture is one that believes in empowering each and every team member and allows each team member to be engaged and enabled for a purpose. This allows the team to respond, participate, initiate, and analyze to provide exceptional outcomes.*

### Requirements:

- BS in civil engineering or related engineering discipline
- 10+ years of experience
- Licensed Professional Engineer
- Prior experience managing civil engineering design projects. Individual can have a background/familiarity in any of the following areas: land development, site development, water resources, water/wastewater, or stormwater

To apply email [Gail@rcassoc.com](mailto:Gail@rcassoc.com)



## Lochmueller Group has great opportunities for Structural Design or Bridge Engineers to join our team!

This is an excellent opportunity to join a growing firm and immediately put your design skills to work on a variety of projects, including highways and bridges for various local public agencies and state DOT's, miscellaneous structural design elements to support other business units, and design-build pursuits.

Candidates must have a Bachelor's degree in Civil or Structural Engineering and be registered as a Professional Engineer; Structural Engineer registration is a plus. **Project Engineer candidates will also have a minimum of 5 years of experience in bridge and structural design.** The position responsibilities include:

- Develop calculations as necessary for structural engineering components on projects.
- Assist CAD technicians to develop structural plans and develop construction specifications for state and municipal transportation projects.
- Perform structural design and develop details as related to roadway bridges, various types of retaining walls, culverts, miscellaneous reinforced/prestressed concrete and structural steel design.
- Act as part of a team of professionals headed by a Project Manager. Candidates must be able to work independently or as part of a larger design team and interact well with the manager and other members on various aspects of the project.
- Prepare cost estimates, calculate quantities, and assist in writing technical engineering and design reports.
- Utilize various structural design and rating software, spreadsheets, and drawing packages (Microstation or AutoCAD) to design and analyze structural components.
- Visit job sites as needed to support projects.
- Perform other duties as assigned.

Experience with Missouri and Illinois DOT projects and/or local agency projects is preferred, as is an understanding of the policies and procedures of these agencies. Proficiency with Microsoft Office products including Excel, Word, and PowerPoint required. Previous experience utilizing seismic analysis and design is also preferred.

**Project Manager or Team Leader candidates should have a minimum of 10 years of experience including** five or more years managing project budgets and financial performance; work assignments for the team; project schedules; and client communications and management. In addition, experience with project pursuits and procurement is strongly desired, including team building; cost estimating; scope development; and proposal writing or presentation.

We also accommodate work-from-home hybrids (depending on experience and assignment specifics), though periodic engagement with various team members is required.

**Benefits:** Lochmueller Group is now an Employee-Owned Company, and we would be excited to have you to join our talented group of employee-owners! In addition to our ESOP, we provide a 401(k) plan, rich coverage for major medical insurance, basic life insurance, short-term and long-term disability insurance, generous vacation and sick leave, Student Loan Repayment benefit, and several others.

**CARDIA:** Means "from the heart" and it is what our values and culture represent here at Lochmueller Group. Creativity; Accountability; Respect; Dedication; Integrity; Achievement – that is what sets us apart from the others!

Check us out at [www.lochgroup.com](http://www.lochgroup.com) or submit your resume to: [jkelly@lochgroup.com](mailto:jkelly@lochgroup.com).

# Special Inspections and Design

## JOB OPENING

**POSITION:** Structural Engineer

### **DESCRIPTION**

We are seeking an experienced Structural Engineer (5+ years experience) for an opportunity to work on a wide variety of projects. The position will be based out of our Collinsville, IL office. You will be responsible for analysis and design of structural systems and components using structural steel, concrete, masonry, wood, and light gage steel. Your duties will include preparation of construction and repair drawings, demolition plans, visual structural inspections, report preparation, and construction review.

### **QUALIFICATIONS**

Qualified candidates must have:

- BS in Civil Engineering (MS is a plus).
- PE license (SE is a plus).
- Minimum 5 years experience.
- Working knowledge of structural engineering software (RISA is ideal).
- Working knowledge of IBC and other national standard codes.
- AutoCAD proficiency is a plus.
- Good written and oral communication skills.

### **TO APPLY**

Please send resume and any questions to Ashlee Peno at [ashleepeno@SIDengineers.com](mailto:ashleepeno@SIDengineers.com)

For more information about our company please visit [www.SIDengineers.com](http://www.SIDengineers.com)



# CIVIL DESIGN, INC.

## WHO WE ARE

At CDI, we strive to help our clients create quality infrastructure while also contributing positively to our communities. Our culture is centered around a fundamental commitment to **Building Stronger Communities**, meaning our team of passionate individuals is dedicated to revitalizing the spaces that contribute to our daily lives. Since its founding in 1996, CDI has grown to over 80 team members with 35 engineers and six services, including **Infrastructure + Analytics, Site, Structures, Survey, Transportation, and Water Resources**.

## JOIN OUR TEAM!

### Water Resources Leader

Effingham, IL | Louisville, KY | St. Louis, MO

### Experienced Structural Engineer

St. Louis, MO | Louisville, KY

### Site Project Engineer (Mid-Level)

Louisville, KY

### Programming Engineer

St. Louis, MO

### Professional Land Surveyor

Louisville, KY

### Senior Water Resources Project Engineer

St. Louis, MO

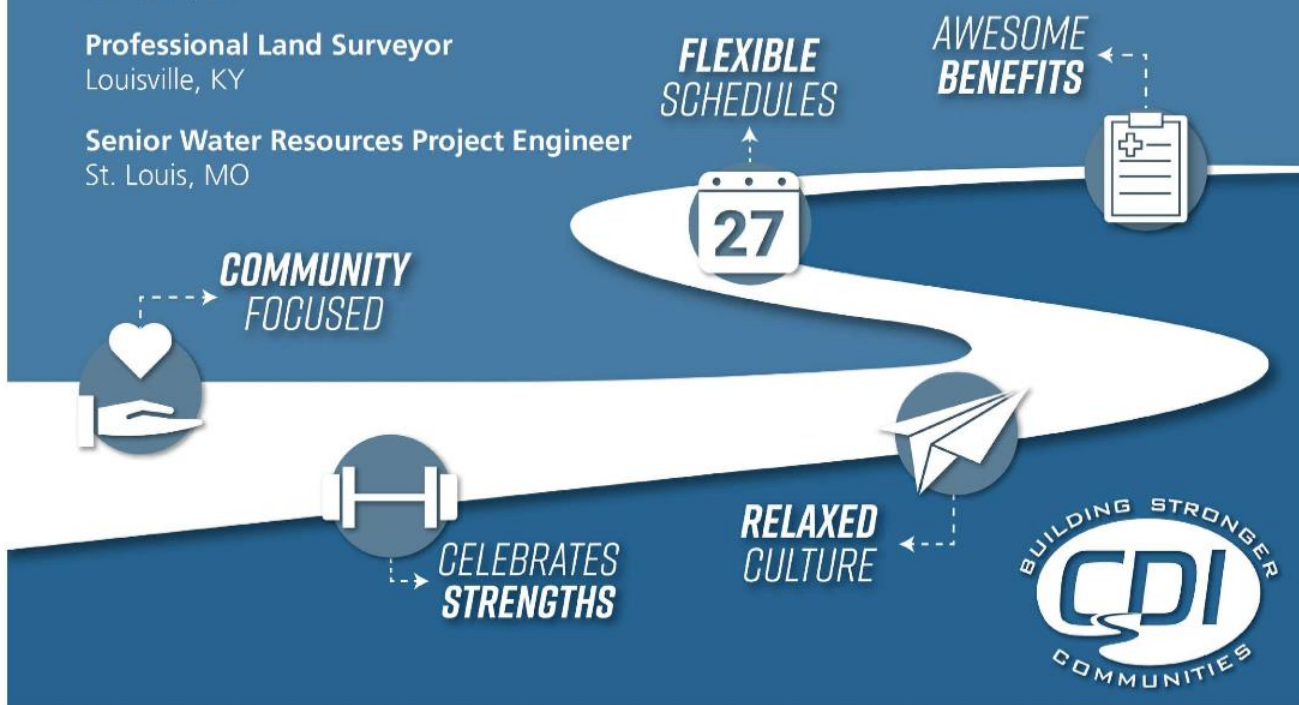
## OUR VALUES

PERSONAL OWNERSHIP

MUTUAL TRUST & RESPECT

CONTINUOUS LEARNING & GROWTH

RESPONSIVENESS



LEARN MORE OR APPLY AT [WWW.CIVILDESIGNING.COM](http://WWW.CIVILDESIGNING.COM)



## **Civil Engineer/E.IT or P.E – Competitive – Wentzville, Missouri**

### **The Role**

Are you an innovative civil engineer with project management experience? If so, Cochran Engineering, one of the largest engineering firms in St. Louis, are looking for a Civil Engineer/E.IT or P.E.

The successful candidate will perform as a project manager, supervising the execution of work and ensuring that the firm maintains its high quality standards.

The key responsibilities of a Civil Engineer/E.IT or P.E include, but are not limited to:

- Performing engineering design.
- Preparing technical reports.
- Building and maintaining positive external relationships with clients, and internal relationships with colleagues.
- Providing direction, coordination, quality assurance, and quality control to engineering colleagues.
- Leading by example, operating with integrity and sound business principals.

### **The Company**

Cochran Engineering is an established, multi-location civil engineering and land surveying firm currently ranked among largest engineering Firms in the St. Louis area by the St. Louis Business Journal.

With 60 years' experience, we are dedicated to building long-lasting client relationships and have an outstanding reputation for superior customer service.

### **The Benefits**

- Simple IRA with 4% Company Match.
- Company paid medical, dental, vision, life and long term disability Insurance.
- Flexible benefits plan.
- Paid vacation/sick time and holidays.
- Professional development training.
- Competitive salary, commensurate with experience.
- Relocation package may be available for this position.

### **The Person**

The essential skills and qualities of a Civil Engineer/E.IT or P.E:

- E.I.T. or P.E. in the State of Missouri.
- 3 to 5+ years' experience in Civil Design.
- Bachelor's Degree – Civil Engineering.
- Proficiency with AutoCAD and Civil 3D.
- Project management skills.
- Areas of expertise may include but are not limited to: roadway, site design, commercial design, water and sewer, and/or residential development.
- Experience with design of hydraulics, hydrology, grading and overall site development is desired.

If you are interest in joining this forward-thinking company, please submit your resume to [msample@cochraneng.com](mailto:msample@cochraneng.com).



**Job Title: Roadway Engineer**

**Location:** Chesterfield, MO

EDSI has an immediate opening for a full time Roadway Engineer with 4-10 years of experience. The ideal candidate will have a strong interest in detailed design work as well as the ability to interact with clients and contractors. Responsibilities include a broad range of planning and design tasks such as roadway design, roadway rehabilitation, ADA compliant designs, bike and pedestrian trail design, traffic signal design, geometric layout, drainage/hydraulics and quantity development. The position requires competent skills to complete feasibility reports and prepare conceptual, preliminary and construction plans and bid documents for a variety of public and private clients.

Requirements include a B.S. in Civil Engineering from an ABET-Accredited University, Professional Engineer License or plan to obtain a P.E. License, proficiency in AutoCAD Civil 3D and GeoPak, an understanding of construction and bid documents including project specifications and strong technical writing, analytical and communication skills.

---

**Job Title: Hydraulic/Water Resources Engineer**

**Location:** Chesterfield, MO

EDSI has an immediate opening for a full time Hydraulic/ Water Resources/Civil Engineer with 4 or more years of experience to support our Structures/Water Resources and Transportation Groups. The ideal candidate for this position will be expected to perform analysis and design related to bridge replacement projects, flood protection, hydraulic studies, and drainage studies. Experience with all H&H aspects of bridge replacement design for small and medium creeks and waterways is required. Roadway drainage design experience; MSD, MoDOT and IDOT experience; and the ability to support structural and/or roadway design is preferred.

Requirements include a B.S. in Civil Engineering from an ABET-Accredited University, proficiency in HECRAS, stormwater drainage system analysis, AutoCAD Civil 3D and/or MicroStation. A Professional Engineer License in the State of Missouri required with a P.E. License in Illinois as well is preferred.

---

**Job Title: Engineering CAD Technician**

**Location:** Chesterfield, MO

EDSI has an immediate opening for a full time Civil Engineering CAD Technician. The ideal candidate should have 3-5 years of experience in design drafting of transportation related projects. Responsibilities include assisting both project managers and engineers with the design and layout of engineering drawings, development of engineering details, preparation of conceptual layouts for highway, roadway and street projects including drainage design, intersection layouts and utility location.

Job Requirements:

- Proficient in AutoCAD, and/or MicroStation design and drafting software
- Work independently, plus the ability to coordinate effectively with multi-disciplined project teams
- Ability to read construction and engineering documents
- Possess workload management skills to meet deadlines
- Detail-oriented

Please send resume to: [Hiring@engdesignsource.com](mailto:Hiring@engdesignsource.com) <http://engdesignsource.net/>





## **Company Overview**

Gonzalez Companies, LLC is a rapidly growing, fast-paced, professional services company specializing in civil engineering, construction management, and construction inspection. Gonzalez is a certified Minority Business Enterprise focused on providing professional services for power, water, sewer, stormwater, roadway, and site development projects. Our 20 plus years in business has been guided by providing our clients with the highest level of professional services. Our 100+ team members are committed to building stronger communities in the markets that we serve. We have offices in St. Louis, MO; Belleville, IL; O'Fallon, IL; Salem, IL; Chicago, IL; and Louisville, KY. Gonzalez has a strong family-oriented culture driven by the desire to achieve strong co-worker, client, and community relationships. Motivated by the principles of continuous learning and growth, our team members have a spirit of entrepreneurship, coupled with mutual trust and respect that results in a synergetic atmosphere providing employee, client, and company success.

## **Opportunities:**

### **Civil Engineering**

Materials Coordinator, Downers Grove IL  
Regional Manager, Downers Grove IL  
Resident Engineer, Downers Grove IL  
Civil Design Engineer, Louisville, KY  
Water/Wastewater Project Engineer, O'Fallon, IL  
Project Engineer, Ottawa IL  
Project Engineer, Downers Grove IL  
Structural Project Engineer, Salem IL

### **Construction Management**

Documentation Engineer, Downers Grove, IL  
NACE Inspector level II, St. Louis MO

For more information and to apply for an open position above, please go to:

<https://www.gonzalezcos.com/careers>

**\*\*For all recruiting or position inquiries, please contact [careers@gonzalezcos.com](mailto:careers@gonzalezcos.com)\*\***



## **JOB OPENINGS**

Horner & Shifrin, Inc. is currently looking for candidates to fill the positions of:

**CAAD Technician (Structural Bridge)**

Associate in Applied Science degree in Drafting Technology, St. Louis

**Project Manager (Water/Wastewater)**

7+ years' experience in drinking water, wastewater and/or storm water design

**Electrical Engineer**

5+ years' experience, knowledge of the National Electrical Code, St. Louis

**Project Manager (Structural Building)**

10+ years' experience, LPE, proficient in AutoCAD, Revit Structure & Ram Structural System

**Project Manager (Transportation)**

10+ years' experience, knowledge of GEOPAK SS4 or Civil 3D, Poplar Bluff, MO Northwest Arkansas

**Project Manager (Transportation)**

10+ years' experience, knowledge of GEOPAK SS4 or Civil 3D, Poplar Bluff, MO

**Engineer (Transportation)**

Entry-level, EIT certificate preferred St. Louis

**GIS Analyst**

5+ years' experience, BS in Geography Computer Science or related field, St. Louis

**Project Engineer (Transportation)**

5+ years' experience, proficient in MicroStation and Geopak SS4, Chicago or St. Louis

Please visit our website at [www. https://www.hornershifrin.com/careers/](https://www.hornershifrin.com/careers/)

# HYDROGRAPHIC SURVEYOR/HYDROGRAPHER



## **Prairie Engineers, P.C. is seeking an Experienced Hydrographic Surveyor / Hydrographer to join their team.**

Do you love spending time outdoors? Are you eager to travel and see the country? Do you want a job that keeps your body active while still challenging your mind? Prairie Engineers is a growing company, looking to add a **Hydrographic Surveyor** or **Hydrographer** to assist with the firm's surveying projects at locations nationwide. This position includes both field and office assignments and will require extensive travel to locations throughout the U.S. with occasional international travel possible. This isn't an easy position; we work long days in sometimes harsh conditions and remote locations. But if you are looking for a challenge, if you enjoy being a part of a capable and contributing team, and if you enjoy developing solutions to get the job done well, we may be the right fit for you! You must be able and willing to be a highly responsible, capable, and contributing member of our team, able to utilize technology and think on your feet. This position will be a full-time position with paid travel expenses and a per diem allowance for meals, generous benefits and a competitive salary based on qualifications. This position is available to be filled in our Hazelwood, Missouri or Vicksburg, Mississippi offices.

### **Essential Job Functions:**

- Ability to travel, often on short notice, and work safely in various locations and all types of weather conditions
- Safe operation of small motor vessels in a variety of inland lakes and river environments and occasionally in near-coastal waters
- Ability to lead and perform hydrographic surveys using HYPACK software and single-beam, multibeam, side-scan sonar, sub-bottom profiler, magnetometer, and other state-of-the-art sensors and methods along with GPS positioning, LiDAR, and various Inertial Motion Sensors.
- Perform and check office surveys including reduction of hydrographic surveys using HYPACK and other software, performing least squared and compass rule computations, and volume and area calculations

We are an equal opportunity employer that recognizes the value of diversity. All qualified individuals will receive consideration for employment without regard to race, color, religion, age, sex, national origin, disability status, genetics, protected veteran status, sexual orientation, gender identity or expression, or any other legally protected status.

### **Minimum Qualifications:**

- Experience:** 4+ years performing hydrographic surveys or 4 years as a surveyor with a strong desire to expand expertise as demonstrated by the willingness to take hydrographic survey coursework outside of working hours
- Travel:** Willingness to travel within the United States to meet project requirements
- Communication:** Good verbal and written skills
- Safety:** A valid driver's license and a clean driving record
- Teamwork:** Ability to work both independently and as part of a team
- Service oriented:** Maintain focus on project delivery and client service with attention to detail and meeting deadlines
- Ideals:** Professional, positive attitude with a strong work ethic

### **Preferred Qualifications:**

- Education:** Bachelor's Degree in Surveying, Civil Engineering, Hydrography, or a related science field
- Certification:** NSPS/THSOA Certification as a Hydrographer or Certified Survey Technician
- Licensure:** Professional Surveyor or Surveyor Intern
- More experience:** Field control, topographic, and boundary surveys and CADD/GIS experience

Preference will be given to applicants who reside in a HUBZone as defined by the US Small Business Administration. For a map of certified HUBZone areas, please refer to the following website: <https://maps.certify.sba.gov/hubzone/map/> Potential candidates for this position should **fill out an application** at [www.prairieengineers.com](http://www.prairieengineers.com) and contact Prairie Engineers via e-mail at [jobs@prairieengineers.com](mailto:jobs@prairieengineers.com).



## Submit items to the newsletter...

Please try to get all announcements for placement in the newsletter to the Newsletter Editor by the 20<sup>th</sup> of the month prior to publication. Items may be sent via e-mail to Brent Vaughn (ASCE newsletter editor) at [brent.vaughn.asce@gmail.com](mailto:brent.vaughn.asce@gmail.com). **MS Word files are the preferred file type.** PDF files are also acceptable but may not look as sharp when inserted into the newsletter and hyperlinks will probably not carry through to the final version. For multiple page announcements, please consider providing a single-page flyer, concisely worded, with links provided to ancillary pages such as registration forms or other attachments. Also, please clearly include in the email subject line a concise title for the announcement and desired month(s) of publication.

Most news items will be available on the Section's Web Page, which can be reached via the link on ASCE National Website ([www.asce.org](http://www.asce.org)). Click on "Geographical and International Units" to link to the Section or go directly to our page at: <http://sections.asce.org/st-louis/>. The Section's Website Editor is Jeff Smith e-mail: [JESmith@HNTB.com](mailto:JESmith@HNTB.com) or via feedback directly from our website.

For more information and updates see our Web Page: <http://sections.asce.org/st-louis/>

This newsletter will be sent to all Section members via e-mail. Delivery of the newsletter hardcopy by First Class mail will be made upon request. Members have the responsibility to keep their contact information in the ASCE national database up to date. Please note that the St. Louis Section is only provided with members' PRIMARY information on file at the Society level. To ensure that we can contact you, please edit your PRIMARY information to contain the information where you would like the section to contact you and how you would like your information to appear in our annual roster.

**Please be sure to keep your PRIMARY contact information up-to-date by contacting ASCE at <http://www.asce.org>, or call 800-548-ASCE (2723).**



**ASCE – St. Louis Section  
c/o The Engineering Center  
4359 Lindell Blvd. St. Louis, MO 63108**