

January 2022

President's Message	2
Notice of Amendment to St. Louis Section Constitution and Bylaws	3
Open Committee Positions	3
Younger Member Group Update	3
EWRI St. Louis Monthly Speaker Series	4
National Levee Safety Program	5
Employment Opportunities	6
Submit items to the newsletter ...	16

Upcoming Events

January

- 20 ASCE / SAME January 2022 Luncheon
- 27 EWRI January Speaker Series

Follow the Section and share with your
network.



Update your bookmarks with our new
Section website

<http://sections.asce.org/st-louis/>



ASCE / SAME January 2022 Luncheon

Thursday, January 20, 2022

USACE Urban Search and Rescue and the Response to the Surfside Condo Collapse

Abstract:

This presentation will cover the topics of defining Urban Search and Rescue (US&R), the Army Corps' role in US&R, the role of structural engineers in US&R, and what is required of those engineers who perform in this field. Additionally, the presentation will discuss the emergency response taken by a team of engineers who responded to the Champlain Towers condominium collapse in Surfside, Florida in the Summer of 2021.

Presenter:

Josh VerDught, P.E.- Chief of Dam and Levee Safety Section, US Army Corps of Engineers. Josh VerDught joined the Corps of Engineers in January 2007 as a student intern in Dam Safety. Following his graduation from SIUE with his Bachelor's Degree in Civil Engineering in 2009, he worked as a structural engineer in the Design Branch, and earned his Master's Degree from SIUE in 2012. In 2017, Josh was selected for his current position as the Chief of the Dam and Levee Safety Section within the Geotechnical Branch. Josh is a registered Professional Engineer in the State of Illinois and lives in Troy, IL with his wife and two children.

Cost:

\$25 In-Person Attendance w/ Lunch, \$5 Virtual (Member)
\$10 Virtual (Non-Member)

Time & Date:

11:30am to 1:00pm, January 20, 2022. Registration starts at 11:30am and lunch is served at 11:45am. The program will begin promptly at 12:00pm. One (1) PDH available.

Where:

Engineers' Club of St. Louis
4359 Lindell Blvd.
St. Louis, MO 63108

Virtual option available!!!

Registration:

Please register by 5:00 PM on January 13, 2022. A link to participate will be sent upon registration for virtual attendees.

[Register online here](#)

Officers & Directors 2021 - 2022

President

John Weiland
Wade Trim
jweiland@wadetrim.com

President-Elect

Alison Graves
Civil Design Inc
agraves@civildesigninc.com

Vice President

Chris Toenjes
Roeslein & Associates, Inc.
chr istoenjes@gmail.com

Secretary

Melantha Norton
Nestle Purina PetCare Co.
diodonna@hotmail.com

Treasurer

Melissa Rettig
melissarettig@gmail.com

Director of Technical Development

vacant

Director of Administration

Shari Cunningham
THD Design Group, Inc.
shari@thddesigngroup.com

Director of Professional Development

Tony Roth
Geotechnology, LLC
troth@geotechnology.com

Past President

Jordan Pettibone
Horner & Shifrin, Inc.
jepettibone.asce@gmail.com

President's Message



Happy New Year! As we turn the page on another calendar year, we look forward to exciting things to come in 2022. From governmental outreach opportunities, interesting programming, and student outreach, there is a lot to be excited about.

Last year, we experienced great success in our endeavor to support infrastructure investment, with the passage of the gas tax increase in Missouri, the first in over two decades, and with the passage of the Federal Infrastructure Bill. We need to keep our “foot on the gas”, though, to continue to address our country’s infrastructure needs. There are opportunities for us as members of ASCE to get involved with government outreach to both our State and Federal Government to help raise awareness. Please consider becoming an ASCE [Key Contact](#). This will allow you receive Key Alerts via email notifying you of public policy developments that need membership action. There are opportunities to get involved with the [Legislative Fly-In](#), scheduled as a hybrid (in-person in Washington, D.C., and virtual) event March 2-4. See the event link for application, including criteria for acceptance. Our Section annually organizes a Legislative Drive-In to Jefferson City to meet with Missouri legislators about current issues such as infrastructure investment and licensure. Last year, this was conducted virtually. Our Government Relations committee, chaired by Dennis Boll (dboll@getechnology.com) is currently evaluating how we will conduct this event this year, likely to occur late February or March. More details will come soon.

Civil engineers stand at the forefront of public service, including disaster response. Hear about the U.S. Army Corps of Engineers’ role in Urban Search and Rescue (US&R), including their response to the Summer 2021 Champlain Towers condominium collapse in Surfside, Florida at ASCE St. Louis Section’s joint luncheon with the Society of American Military Engineers (SAME) on Thursday January 20th. A registration link is included in this newsletter. We have a great lineup of interesting topics for the next several months also. Stay tuned for more.

One of the ways we can make a positive impact as civil engineers is through mentorship of students. If you have an interest in STEM outreach to K-12 students, please reach out to our Pre-College Outreach Chair Christoph Opperman (copperman@kaskaskiaeng.com) to volunteer. There are many schools with STEM programs that would love to hear about your experience as a civil engineer! Student mentorship also includes meeting with students in civil engineering programs at area universities. There are five universities with civil engineering undergraduate programs that the ASCE St. Louis Section is affiliated with: SLU, Missouri S&T, University of Missouri, SIU-Edwardsville, and SIU-Carbondale. These students also would love to hear about your experience as a civil engineer. Feel free to reach out to our Student Outreach Chair Jeff Smith (jesmith@hntb.com) and myself (jweiland@wadetrim.com) if you’re interested in getting involved.

Lastly, we’re looking to fill a few vacancies in our committees. The Communications Committee, currently chaired on an interim basis by Brent Vaughn (brent.vaughn.asce@gmail.com), is looking for a new chair. If you’re

interested in getting involved and meeting new people, this is a great opportunity. We're also looking for help with the Annual Dinner committee. For more information on the responsibilities of our various committees, check out our [Section Handbook](#). If you're interested in getting involved in any committee, please reach out to the committee chair, the applicable department director, or myself.

Wishing you the best in 2022!

-John

Notice of Amendment to St. Louis Section Constitution and Bylaws

As you have seen in recent Section Newsletters, revisions to the Section Constitution and Bylaws were recently proposed by the Section Board of Directors. The revisions, posted on the Section website were voted on and approved. The Bylaws revisions were approved by 2/3 majority of the Section Board of Directors on October 8, 2021, and the Constitution revisions were approved by 2/3 majority of Subscribing Members voting after a voting period of 30 days ending December 8, 2021. The approved Constitution and Bylaws are posed on the Section website under [Resources](#).

Open Committee Positions

Communications Co-Chair - The Committee's primary goal is to communicate to all local members news of past, present, and future activities and programs for the purpose of stimulating greater interest and participation in section affairs. The Co-Chair is expected to work closely with the president and chairmen of other committees to obtain information of vital interest to the membership. Correct and timely information should be obtained from the program committee regarding forthcoming meetings. Valuable news will also be found in the Section Leader, a regular publication issued from ASCE headquarters. An informal but regular system of contacts or reporters is an essential ingredient to the collection of interesting news.

Younger Member Group Update

Contact Michelle Bresnahan, YMG Chair, at MBresnahan@lochgroup.com if you would like to be added to the email list or if you have any questions or comments regarding the YMG Update.



EWRI St. Louis News

EWRI ST. LOUIS MONTHLY SPEAKER SERIES EVENT

The St. Louis Section of EWRI is pleased to announce our monthly webinar **on Thursday, January 27, 2022 from 11:30 am-12:30 pm Central Time.**

This presentation will be broadcast live over a webinar. Registration is free to ASCE members. **Advance registration is required by noon, Monday, January 24, 2022.** Please register online at the following link:

[EWRI January 2022 Speaker Series Presentation](#)

Registrants will receive detailed login and dial-in information prior to the event.

Considerations for planning, design and implementation of dam decommissioning and removal

Implementation of dam decommissioning and dam removal is an increasingly common management strategy selected by facility and river managers and riverfront communities. These projects are motivated by a broad array of objectives that may include least-cost management of aging infrastructure, public safety, reduction of environmental hazard potential, and restoration of aquatic habitat and watershed connectivity, to name a few. Although no two project sites are alike, a series of common considerations often factor into the successful planning, design and implementation of dam decommissioning and removal. We will use a series of dam removal case studies from across the nation to explore several of these common project elements.

SPEAKER

Mike Burke, PE

Mike Burke is a principal water resources engineer at Inter-Fluve, Inc. focused on aquatic resources conservation and restoration. With interdisciplinary training in river hydraulics, hydrology, geomorphology, and ecology, his interests include addressing the ecologic impacts of water resources development and habitat restoration based on understanding of large-scale physical influences and ecological response. Working across all stages of project lifecycles, Mike's 25 years of professional engineering experience include extensive restoration planning, design, and implementation support in New England, the Upper Midwest, the Pacific Northwest and California.

Thank you to our joint seminar sponsor, **EDM Incorporated and Southern Illinois University Edwardsville (SIUE)!**

Please contact **Rohan Benjankar, PhD** (rbenjan@siue.edu) with any questions, if you are interested in presenting, or have an idea for a topic.



US Army Corps of Engineers



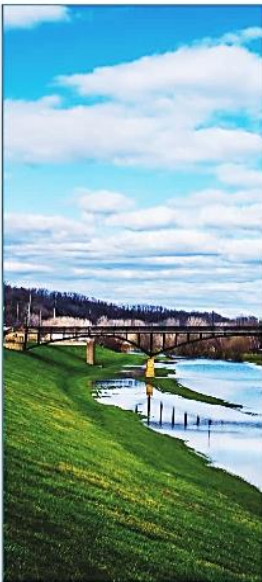
NATIONAL LEVEE SAFETY PROGRAM

Announcing Stakeholder Meetings WINTER 2021/2022



CALLING EVERYONE WHO CARES ABOUT LEVEE SAFETY & COMMUNITY RESILIENCY

- » Levee Owners
- » Levee Operators
- » States
- » Tribes
- » Local Governments
- » Residents
- » Businesses
- » Engineers
- » Floodplain Managers
- » Emergency Managers
- » Public Works
- » Schools
- » Police & Fire



Starting January 2022, the U.S. Army Corps of Engineers (USACE) and the Federal Emergency Management Agency (FEMA) are launching a series of in-person and virtual meetings to seek input on how to improve the way levees are managed in the Nation.

REGISTER TODAY at www.levéesafety.org for one of these meetings to share your challenges in living with levees and provide your input into the design of a new National Levee Safety Program, specifically:

- » What should the Nation’s vision be for improving levee safety? Who should play what role?
- » What information is most useful to you as a state/local/regional/tribal government, levee owner/operator, emergency manager, etc.?
- » What best practices, guidance or procedures would be most helpful to you in managing flood risk and ensuring your levee is reliable?
- » How can we most effectively talk about the benefits that levees provide, while also making people aware of the inherent risks in living in the floodplain?

IN-PERSON STAKEHOLDER MEETINGS COMING TO A CITY NEAR YOU

LOCATION	DATE	TIME
Harford, CT	January 11, 2022	12:00 – 5:00 pm (local time)
Cincinnati, OH	January 13, 2022	12:00 – 5:00 pm (local time)
Portland, OR	January 18, 2022	12:00 – 5:00 pm (local time)
Sacramento, CA	January 20, 2022	12:00 – 5:00 pm (local time)
Jacksonville, FL	February 1, 2022	12:00 – 5:00 pm (local time)
Houston, TX	February 3, 2022	12:00 – 5:00 pm (local time)
St. Louis, MO	February 8, 2022	12:00 – 5:00 pm (local time)

- Visit www.levéesafety.org to sign-up for a meeting. Pre-registering for a meeting is required and each meeting will be limited to 100 participants.
- Participants are encouraged to follow Covid-19 precautions for each state. Attendees will be notified if any meeting should need to move to a virtual format due to future Covid-19 restrictions.
- Registered participants can check in to the meeting starting at 11:30am.

VIRTUAL WEBINARS PARTICIPATE FROM ANYWHERE

DATE	TIME
February 15, 2022	1:00-5:00pm EST
February 17, 2022	1:00-5:00pm EST
February 22, 2022	1:00-5:00pm EST
February 24, 2022	1:00-5:00pm EST

- Visit www.levéesafety.org to register for a virtual webinar.
- Each webinar will be limited to 100 participants.

See the National Levee Safety Program website, www.levéesafety.org to learn more about levees in the United States and to sign up to attend a meeting or a webinar.



Employment Opportunities



ST. LOUIS CHAPTER MISSOURI SOCIETY OF PROFESSIONAL ENGINEERS

Instructor needed for the Roadway Class for the MSPE Civil PE Refresher Course!
This would be for one Saturday in February or March from 8 am to 12 pm, teaching materials are already prepared, and the position is paid. A PE license is required.
Contact Lisa Cheng for more information at Lisa.Cheng@hdrinc.com

Positions available at EDM

Accountant Position

A St. Louis design firm has an opening for a full-time accountant. Salary is commensurate with experience.

Some of the Responsibilities include:

Providing financial and project reports for management, Maintaining all corporate financial records, Maintaining project management system including cost accounting and progress reporting, Maintaining personnel records and payroll, Preparing invoices, Supervising account receivables collections.

Accountant Qualifications:

Self-starter capable of working independently.
Experience with all aspects of Architectural/Engineering firm accounting
Good communication skills – internal and external
Skilled in using MS Excel, MS Word and Deltek Vision accounting software.

Education, Experience, and Licensing Requirements:

Bachelor's or master's degree in accounting or finance
Minimum 5 years' experience in accounting/finance

Must be a U.S. citizen or lawfully authorized alien worker.

Marketer Position

A St. Louis design firm has an opening for a full-time Marketer. Salary is commensurate with experience.

List of some of the Responsibilities

Responsible for the preparation, design and coordination of RFQ/RFP responses.
Participate in RFQ strategy planning, including screening RFQ for unusual or challenging requirements.
Create, organize and update all marketing/business development materials, including overviews, project description pages, staff resumes, advertisements, social media releases/posts, and project award applications.
Accountable for final quality check/proofreading of grammar and compliance for all responses and marketing material.

Qualifications

Associate's or Bachelor's degree in Communication, Marketing, Journalism or related field.
Software experience with InDesign, Photoshop, and MS Office Suite, especially Excel, Word and PowerPoint.
Possess strong verbal, written and graphic communication skills.
Experience with SF330 forms is a plus. A similar position with a firm in a related field (architecture/engineering/construction/real estate) is desired, but if not, willing to learn all facets of AEC marketing.

The firm is an employee-owned equal opportunity employer. For immediate consideration, email your resume to Gholam Masoumy, President, EDM, at Gholam.masoumy@edm-inc.com.

At DMA, we engineer the foundations of communities. Our business is to create and preserve the Nation's infrastructure. We design and assess highways and bridges, buildings, sewers and tunnels, and electric and gas networks used by millions of Americans every day. We work on iconic projects – international airports, national monuments, universities, hospitals and medical campuses, sports stadiums, and so much more.

Our family-first and hard-working culture stretches far beyond the name of Mason. We believe everyone works together, an "all oars in the water" approach to help everyone succeed. Our team members are like extended family and we collaborate to serve our customers with integrity.

We are energized by the challenge and inspired by our people.

CURRENT OPENINGS (St. Louis Office)

Benefits package includes health, dental, life, long-term disability, and long-term care insurances, 401k, holidays, PTO and every other Friday OFF.

STRUCTURAL PROJECT MANAGER - Minimum 10 years of experience; Licensed PE or SE; Bentley RAM Modules, RISA 3-D and L-Pile. Knowledge with using AutoCAD and REVIT is a plus.

STAFF STRUCTURAL ENGINEER - Minimum 5-8 years of experience; RISA, RAM, L-Pile, AutoCad software is required. REVIT experience is a plus.

CIVIL STAFF ENGINEER - Minimum 2 years of experience; AutoCAD-Civil3D and exposure to engineering modeling software such as HEC-HMS, HEC-RAS, preferred; requires an Engineering Intern (EI) Certification with intentions of pursuing and obtaining a Professional Engineering (PE) License.

CIVIL ENGINEERING CAD DESIGNER - Minimum 5-8 years of experience; AutoCAD / with a focus on civil engineering design. Experience should include site layout, grading, drainage and utility design projects. Civil 3D experience preferred. A working knowledge of Microstation is a plus.

DRAFTER/DESIGNER – ELECTRICAL UTILITY - Minimum 5-10 years of experience; knowledge of Bluebeam and a proficiency for Bentley MicroStation, AutoCAD, and/or comparable applications; working knowledge in utility, transmission, and power distribution applications, associated with the design modification of schematic, wiring and interconnect diagrams.

For all career opportunities at DMA, and to apply, visit: davidmason.com/careers

 Health	 Dental	 Life	 Long-Term Disability	 Long-Term Care	 401(k) Option
 Great Culture + Team	 Professional Growth Opportunities	 Family Environment	 Every Other Friday Off	 Equal Opportunity Employer	

St. Louis | Chicago | Philadelphia

davidmason.com



Lochmueller Group has great opportunities for Structural Design or Bridge Engineers to join our team!

This is an excellent opportunity to join a growing firm and immediately put your design skills to work on a variety of projects, including highways and bridges for various local public agencies and state DOT's, miscellaneous structural design elements to support other business units, and design-build pursuits.

Candidates must have a Bachelor's degree in Civil or Structural Engineering and be registered as a Professional Engineer; Structural Engineer registration is a plus. **Project Engineer candidates will also have a minimum of 5 years of experience in bridge and structural design.** The position responsibilities include:

- Develop calculations as necessary for structural engineering components on projects.
- Assist CAD technicians to develop structural plans and develop construction specifications for state and municipal transportation projects.
- Perform structural design and develop details as related to roadway bridges, various types of retaining walls, culverts, miscellaneous reinforced/prestressed concrete and structural steel design.
- Act as part of a team of professionals headed by a Project Manager. Candidates must be able to work independently or as part of a larger design team and interact well with the manager and other members on various aspects of the project.
- Prepare cost estimates, calculate quantities, and assist in writing technical engineering and design reports.
- Utilize various structural design and rating software, spreadsheets, and drawing packages (Microstation or AutoCAD) to design and analyze structural components.
- Visit job sites as needed to support projects.
- Perform other duties as assigned.

Experience with Missouri and Illinois DOT projects and/or local agency projects is preferred, as is an understanding of the policies and procedures of these agencies. Proficiency with Microsoft Office products including Excel, Word, and PowerPoint required. Previous experience utilizing seismic analysis and design is also preferred.

Project Manager or Team Leader candidates should have a minimum of 10 years of experience including five or more years managing project budgets and financial performance; work assignments for the team; project schedules; and client communications and management. In addition, experience with project pursuits and procurement is strongly desired, including team building; cost estimating; scope development; and proposal writing or presentation.

We also accommodate work-from-home hybrids (depending on experience and assignment specifics), though periodic engagement with various team members is required.

Benefits: Lochmueller Group is now an Employee-Owned Company, and we would be excited to have you to join our talented group of employee-owners! In addition to our ESOP, we provide a 401(k) plan, rich coverage for major medical insurance, basic life insurance, short-term and long-term disability insurance, generous vacation and sick leave, Student Loan Repayment benefit, and several others.

CARDIA: Means "from the heart" and it is what our values and culture represent here at Lochmueller Group. Creativity; Accountability; Respect; Dedication; Integrity; Achievement – that is what sets us apart from the others!

Check us out at www.lochgroup.com or submit your resume to: jkelly@lochgroup.com.

Geotechnical/Tunnel Engineer at WSP

WSP is currently initiating a search for a full-time Geotechnical/Tunnel Engineer for our St. Louis, Missouri office. Be involved in projects with our our Geotechnical and Tunneling Technical Excellence Center and be a part of a growing organization that meets our client's objectives and solves their challenges.

At WSP, we are driven by inspiring the right people to be part of our future-focused business objectives. Our devotion to teamwork has allowed us to build communities, expand our skylines and tunnel beneath the earth. Here at WSP, anything is within our reach and yours as a WSP employee. Come join us and help shape the future!

The successful candidate will be involved infrastructure projects in the Central region as well as projects across US. The position requires an effective team player who can work cooperatively to provide engineering services to its clients on design and construction projects.

<https://phe.taleo.net/phe01/ats/careers/v2/viewRequisition?org=V8D6AK&cws=37&rid=1868>

Structural Engineer position at Special Inspections and Design

DESCRIPTION

We are seeking an experienced Structural Engineer (5+ years experience) for an opportunity to work on a wide variety of projects. The position will be based out of our Collinsville, IL office. You will be responsible for analysis and design of structural systems and components using structural steel, concrete, masonry, wood, and light gage steel. Your duties will include preparation of construction and repair drawings, demolition plans, visual structural inspections, report preparation, and construction review.

QUALIFICATIONS

Qualified candidates must have:

- BS in Civil Engineering (MS is a plus).
- PE license (SE is a plus).
- Minimum 5 years experience.
- Working knowledge of structural engineering software (RISA is ideal).
- Working knowledge of IBC and other national standard codes.
- AutoCAD proficiency is a plus.
- Good written and oral communication skills.

TO APPLY

Please send resume and any questions to Ashlee Peno at ashleepeno@SIDengineers.com

For more information about our company please visit www.SIDengineers.com

CIVIL DESIGN, INC.

WHO WE ARE

At CDI, we strive to help our clients create quality infrastructure while also contributing positively to our communities. Our culture is centered around a fundamental commitment to **Building Stronger Communities**, meaning our team of passionate individuals is dedicated to revitalizing the spaces that contribute to our daily lives. Since its founding in 1996, CDI has grown to over 80 team members with 35 engineers and six services, including **Infrastructure + Analytics, Site, Structures, Survey, Transportation, and Water Resources**.

JOIN OUR TEAM!

Water Resources Leader

Effingham, IL | Louisville, KY | St. Louis, MO

Experienced Structural Engineer

St. Louis, MO | Louisville, KY

Site Project Engineer (Mid-Level)

Louisville, KY

Programming Engineer

St. Louis, MO

Professional Land Surveyor

Louisville, KY

Senior Water Resources Project Engineer

St. Louis, MO

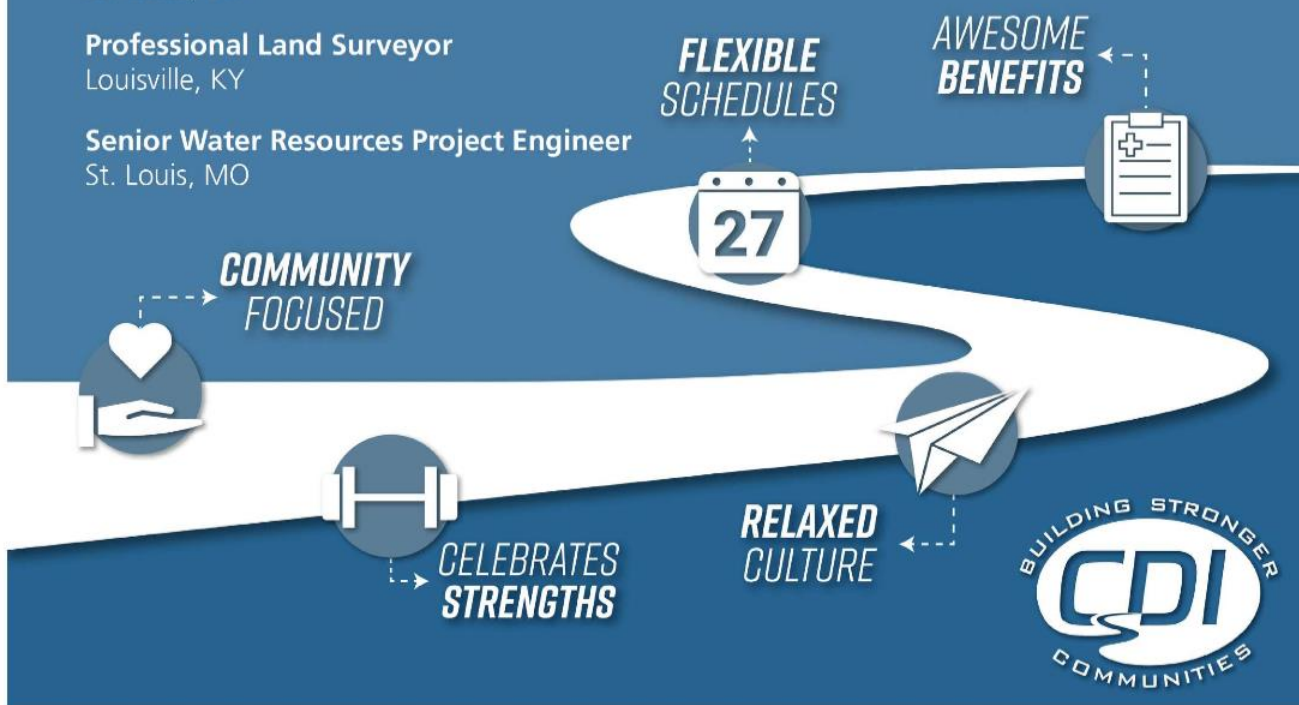
OUR VALUES

PERSONAL OWNERSHIP

MUTUAL TRUST & RESPECT

CONTINUOUS LEARNING & GROWTH

RESPONSIVENESS



LEARN MORE OR APPLY AT WWW.CIVILDESIGNING.COM



WE'RE HIRING

DESCRIPTION

The right candidate is a degreed engineer with experience with industrial and/or bridge projects. Duties will include preparation of design drawings, specifications, and reports, as well as generating studies and cost estimates. Successful candidates should have experience designing industrial and/or bridge structures using applicable codes (IBC, AASHTO, ASCE-7), as well as material design codes (AISC, ACI concrete, ACI masonry, etc.). Proficiency using finite element software (STAAD, RISA), CAD, and spreadsheets is required. Individual shall be self-motivated, able to manage time effectively, and able to stay within defined project budgets and work scopes. Good people skills are necessary to work collaboratively as part of a design team and to communicate with clients, other project personnel, and management.

This individual should also be able to work independently and collaboratively. Good people skills and willingness to travel (on occasion) are a must.

REQUIREMENTS

- B.S. Degree with Emphasis in Structural Engineering
- Licensed Professional Engineer or Ability to Become Licensed
- 3-10 Years of Relevant Experience

CULTURE

- Fun, Collaborative Work Environment
- Challenging & Fulfilling Projects Across Multiple Markets
- Professional Development & Networking Opportunities
- Tuition Reimbursement

HOW TO APPLY

Please visit <http://www.cdgengineers.com/careers/> or email your resume to careers@cdgengineers.com.

CDG Engineers, Inc. is an Equal Opportunity Employer and does not discriminate on the basis of race, religion, color, national origin, age, sex, gender, disability, genetic information, or any other characteristic protected by law.

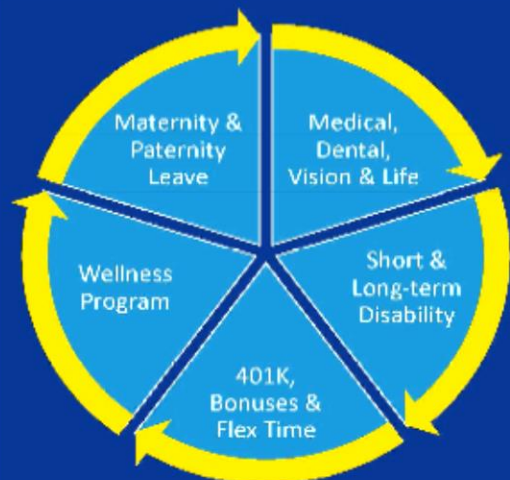
STRUCTURAL ENGINEER



CDG's greatest strength is our culture of commitment to the brightest people

CDG is looking for a degreed structural engineer to join our St. Louis, MO office. CDG is a multi-discipline consulting engineering firm headquartered in St. Louis. The firm has approximately 80 personnel with capabilities in civil, structural, mechanical, electrical, and architectural disciplines primarily servicing the fields of infrastructure, power, mining, industrial, and agriculture. CDG is known for solving some of the most complex problems in challenging environments and our staff is expected to regularly engage in high level problem solving to enable our clients to be successful.

BENEFITS





Civil Engineer/E.IT or P.E – Competitive – Wentzville, Missouri

The Role

Are you an innovative civil engineer with project management experience? If so, Cochran Engineering, one of the largest engineering firms in St. Louis, are looking for a Civil Engineer/E.IT or P.E.

The successful candidate will perform as a project manager, supervising the execution of work and ensuring that the firm maintains its high quality standards.

The key responsibilities of a Civil Engineer/E.IT or P.E include, but are not limited to:

- Performing engineering design.
- Preparing technical reports.
- Building and maintaining positive external relationships with clients, and internal relationships with colleagues.
- Providing direction, coordination, quality assurance, and quality control to engineering colleagues.
- Leading by example, operating with integrity and sound business principals.

The Company

Cochran Engineering is an established, multi-location civil engineering and land surveying firm currently ranked among largest engineering Firms in the St. Louis area by the St. Louis Business Journal.

With 60 years' experience, we are dedicated to building long-lasting client relationships and have an outstanding reputation for superior customer service.

The Benefits

- Simple IRA with 4% Company Match.
- Company paid medical, dental, vision, life and long term disability Insurance.
- Flexible benefits plan.
- Paid vacation/sick time and holidays.
- Professional development training.
- Compleative salary, commensurate with experience.
- Relocation package may be available for this position.

The Person

The essential skills and qualities of a Civil Engineer/E.IT or P.E:

- E.I.T. or P.E. in the State of Missouri.
- 3 to 5+ years' experience in Civil Design.
- Bachelor's Degree – Civil Engineering.
- Proficiency with AutoCAD and Civil 3D.
- Project management skills.
- Areas of expertise may include but are not limited to: roadway, site design, commercial design, water and sewer, and/or residential development.
- Experience with design of hydraulics, hydrology, grading and overall site development is desired.

If you are interest in joining this forward-thinking company, please submit your resume to msample@cochraneng.com.



Job Title: Roadway Engineer

Location: Chesterfield, MO

EDSI has an immediate opening for a full time Roadway Engineer with 4-10 years of experience. The ideal candidate will have a strong interest in detailed design work as well as the ability to interact with clients and contractors. Responsibilities include a broad range of planning and design tasks such as roadway design, roadway rehabilitation, ADA compliant designs, bike and pedestrian trail design, traffic signal design, geometric layout, drainage/hydraulics and quantity development. The position requires competent skills to complete feasibility reports and prepare conceptual, preliminary and construction plans and bid documents for a variety of public and private clients.

Requirements include a B.S. in Civil Engineering from an ABET-Accredited University, Professional Engineer License or plan to obtain a P.E. License, proficiency in AutoCAD Civil 3D and GeoPak, an understanding of construction and bid documents including project specifications and strong technical writing, analytical and communication skills.

Job Title: Engineering CAD Technician

Location: Chesterfield, MO

EDSI has an immediate opening for a full time Civil Engineering CAD Technician. The ideal candidate should have 3-5 years of experience in design drafting of transportation related projects. Responsibilities include assisting both project managers and engineers with the design and layout of engineering drawings, development of engineering details, preparation of conceptual layouts for highway, roadway and street projects including drainage design, intersection layouts and utility location.

Job Requirements:

- Proficient in AutoCAD, and/or MicroStation design and drafting software
- Work independently, plus the ability to coordinate effectively with multi-disciplined project teams
- Ability to read construction and engineering documents
- Possess workload management skills to meet deadlines
- Detail-oriented

Job Title: Structural/Bridge Engineer

Location: Chicagoland

Engineering Design Source, Inc. (EDSI) is a vibrant Civil Engineering and Surveying Firm. We are currently expanding our Bridge Department and are looking for a Structural/Bridge Engineer to join our team in Chicagoland. The qualified applicant will have a minimum of 4 years of structural design experience and be a registered PE. Licensure as an SE is beneficial. The main focus of the applicant's experience should be bridge design. The ideal applicant will have experience successfully completing State Department of Transportation projects. The applicant shall be proficient in the completion of structural calculations and preparation of plans and specifications from the preliminary design phase through final PS&E documents. Strong communications skills and technical writing abilities are required. Computer capabilities for structural design and drafting are required. The ability to successfully collaborate and work as an integral member of a professional design team are required.

Requirements of Position:

- Location: St. Louis, MO (Remote work or in office)
- Licensing: PE (minimum), SE (beneficial)
- Experience: 4 years (minimum)
- Education: BSCE (accredited, minimum)
- Computer Program Proficiency (minimum): LEAP Bridge Concrete CONNECT, LPILE, Excel, MicroStation V8i, Word, PowerPoint

Please send resume to: Hiring@engdesignsource.com <http://engdesignsource.net/>



Company Overview

Gonzalez Companies, LLC is a rapidly growing, fast-paced, professional services company specializing in civil engineering, construction management, and construction inspection. Gonzalez is a certified Minority Business Enterprise focused on providing professional services for power, water, sewer, stormwater, roadway, and site development projects. Our 20 plus years in business has been guided by providing our clients with the highest level of professional services. Our 100+ team members are committed to building stronger communities in the markets that we serve. We have offices in St. Louis, MO; Belleville, IL; O'Fallon, IL; Salem, IL; Chicago, IL; and Louisville, KY. Gonzalez has a strong family-oriented culture driven by the desire to achieve strong co-worker, client, and community relationships. Motivated by the principles of continuous learning and growth, our team members have a spirit of entrepreneurship, coupled with mutual trust and respect that results in a synergetic atmosphere providing employee, client, and company success.

Opportunities:

Civil Engineering

Materials Coordinator, Downers Grove IL
Regional Manager, Downers Grove IL
Resident Engineer, Downers Grove IL
Civil Design Engineer, Louisville, KY
Water/Wastewater Project Engineer, O'Fallon, IL
Project Engineer, Ottawa IL
Project Engineer, Downers Grove IL
Structural Project Engineer, Salem IL

Construction Management

Documentation Engineer, Downers Grove, IL
NACE Inspector level II, St. Louis MO

For more information and to apply for an open position above, please go to:

<https://www.gonzalezcos.com/careers>

****For all recruiting or position inquiries, please contact careers@gonzalezcos.com****



JOB OPENINGS

Horner & Shifrin, Inc. is currently looking for candidates to fill the positions of:

CAAD Technician (Structural Bridge)

Associate in Applied Science degree in Drafting Technology, St. Louis

Project Manager (Water/Wastewater)

7+ years' experience in drinking water, wastewater and/or storm water design

Electrical Engineer

5+ years' experience, knowledge of the National Electrical Code, St. Louis

Project Manager (Structural Building)

10+ years' experience, LPE, proficient in AutoCAD, Revit Structure & Ram Structural System

Project Manager (Transportation)

10+ years' experience, knowledge of GEOPAK SS4 or Civil 3D, Poplar Bluff, MO Northwest Arkansas

Project Manager (Transportation)

10+ years' experience, knowledge of GEOPAK SS4 or Civil 3D, Poplar Bluff, MO

Engineer (Transportation)

Entry-level, EIT certificate preferred St. Louis

GIS Analyst

5+ years' experience, BS in Geography Computer Science or related field, St. Louis

Project Engineer (Transportation)

5+ years' experience, proficient in MicroStation and Geopak SS4, Chicago or St. Louis

Please visit our website at [www. https://www.hornershifrin.com/careers/](https://www.hornershifrin.com/careers/)

Submit items to the newsletter...

Please try to get all announcements for placement in the newsletter to the Newsletter Editor by the **20th of the month prior to publication**. Items may be sent via e-mail to Brent Vaughn (ASCE newsletter editor) at brent.vaughn.asce@gmail.com. **MS Word files are the preferred file type**. PDF files are also acceptable but may not look as sharp when inserted into the newsletter and hyperlinks will probably not carry through to the final version. For multiple page announcements, please consider providing a single-page flyer, concisely worded, with links provided to ancillary pages such as registration forms or other attachments. Also, please clearly include in the email subject line a concise title for the announcement and desired month(s) of publication.

Most news items will be available on the Section's Web Page, which can be reached via the link on ASCE National Website (www.asce.org). Click on "Geographical and International Units" to link to the Section or go directly to our page at: <http://sections.asce.org/st-louis/>. The Section's Website Editor is Jeff Smith e-mail: JESmith@HNTB.com or via feedback directly from our website.

For more information and updates see our Web Page: <http://sections.asce.org/st-louis/>

This newsletter will be sent to all Section members via e-mail. Delivery of the newsletter hardcopy by First Class mail will be made upon request. Members have the responsibility to keep their contact information in the ASCE national database up to date. Please note that the St. Louis Section is only provided with members' PRIMARY information on file at the Society level. To ensure that we can contact you, please edit your PRIMARY information to contain the information where you would like the section to contact you and how you would like your information to appear in our annual roster.

Please be sure to keep your PRIMARY contact information up-to-date by contacting ASCE at <http://www.asce.org>, or call 800-548-ASCE (2723).



**ASCE – St. Louis Section
c/o The Engineering Center
4359 Lindell Blvd. St. Louis, MO 63108**