

October 2020

President's Message	2
St. Louis Section 2020 Annual Awards Presentations	3
Open Committee Positions	12
EWRI Monthly Speaker Series Event	13
EWRI – Water, Water, Everywhere	14
MSPE-ASCE November Joint Luncheon.....	15
Structural and Geo-Confluence	16
Volunteer Opportunity through Community Engineering Corps (CE Corps)	17
FE Review Sessions	18
Women in Construction Awards....	19
Missouri S&T	20
Employment Opportunities	21
Submit items to the newsletter... ..	23

Upcoming Events

October

- 13 ASCE October 2020 Webinar
- 15 EWRI St. Louis Monthly Speaker Series

November

- 5... Structural and Geo-Confluence
- 6 EWRI – Water, Water, Everywhere
- 10 MSPE-EWRI Joint Luncheon

Follow the Section and share with your network.



Update your bookmarks with our new Section website

<http://sections.asce.org/st-louis/>



ASCE October 2020 Webinar

I-270 North Project

Presenters: Justin Wolf, PE and Jennifer Becker, PE

Abstract:

I-270 North Project: I-270 North was originally constructed in the 1960s and today, carries over 140,000 vehicles per day. MoDOT has undertaken to modernize the operations, safety, and infrastructure throughout an 8-mile corridor. The \$278 million project is MoDOT's largest project statewide in the last 10 years. Join members of the project team as they walk through the challenges faced during the development of the project and how the final configuration will improve safety and reliability of the I-270 North corridor.

About the Presenters:

Justin Wolf, PE is the I-270 North Project Director. Justin has over 21 years of experience in highway design at the Missouri Department of Transportation. As Project Director, he is responsible for leading MoDOT's I-270 North Design-Build team.

Jennifer Becker, PE is Transportation Project Manager for MoDOT's St. Louis District with over 19 years of experience in all aspects of highway design. As Design Coordinator on the I-270 North Project, she is responsible for overseeing quality oversight of design plan production, environmental permitting and compliance, and utility coordination.

Time and Date:

12:00pm to 1:00pm, October 13, 2020. One (1) PDH available.

Cost:

Free!

Registration:

Please register [here](#) by 9:00 PM on October 12, 2020. A link will be sent the morning of the event to access the webinar.

Thank you for your attention and response. I look forward to seeing you at the luncheon.

Officers & Directors 2020 - 2021

President

Jordan Pettibone
Horner & Shifrin, Inc.
jepettibone.asce@gmail.com

President-Elect

John Weiland
Wade Trim
jweiland@wadetrim.com

Vice President

Alison Graves
Civil Design Inc
agraves@civildesigninc.com

Secretary

Chris Toenjes
Roeslein & Associates, Inc.
chr istoenjes@gmail.com

Treasurer

Melantha Norton
Nestle Purina PetCare Co.
diodonna@hotmail.com

Director of Administration

Shari Cunningham
THD Design Group, Inc.
shari@thddesigngroup.com

Director of Professional Development

Melissa Rettig
Jacobs
Melissa.Rettig@jacobs.com

Director of Technical Development

William S. Stahlman III
America's Central Port
bstahlman@americascentralport.com

Past President

Brent Vaughn
Department of Civil Engineering
Southern Illinois University Edwardsville
brent.vaughn.asce@gmail.com

President's Message



I'm excited to begin my term as the St. Louis Section President. Thank you for entrusting me with our group for the next 12 months. I want to thank Brent Vaughn for his service to our Section this past year, especially his guidance through a once-in-a-lifetime event. I have known Brent since I was his student at SIUe. (FYI – it has been difficult to call my teacher by his first name). It is an honor to serve after him, learning from him. Just as when he was my faculty advisor, his dedication to ASCE is inspiring. I also want to thank Stephen Noeth and Tony Roth for their work ensuring the presenters and programs were ready to go each month during this pandemic. We have been able to leverage the virtual meeting technology many of our firms were utilizing already to immediately pivot our monthly luncheons online. It has been a relatively seamless transition.

As I said in my remarks during our annual dinner, our Section is highly regarded at the Society level with our active members in our committees, institutes, and members on national committees. When we attend conventions and conferences, it is discovered we set the trends. Our Section is innovative. We are open minded. We are engaging with our Younger Members. I am always proud to say I represent the St. Louis Section.

I mentioned also about outreach, Pre-College Outreach specifically. At the Presidents & Governors Forum last month, Society spoke about recruiting more members. And while we want to work on transitioning our Student Members to Associate Members (and good news is coming about this soon!), the work of getting these students into the industry has occurred. High school and middle school students are not yet sure if they even want to pursue engineering. The most recent PISA scores indicate our high school students are still lacking in math (30th) and science (11th) compared to other developed countries in the world. And the scores remained relatively flat from the previous 3 year cycle the test was administered. Worse, according to a 2017 Lockheed Martin survey, 38% of students showed a natural interest in math or science.

So, I see middle and high schools as a perfect target to reverse these numbers. Luckily, there is no shortage of outreach materials available. From the Dream Big educational initiative (www.dreambigfilm.com) to our Society's outreach page (www.asce.org/pre-college_outreach) there is no shortage for educational material. We also have a Pre-College Outreach committee (led by Christoph Opperman). Our Section has given presentations to student chapters, manned career fair booths, and spoken to high school engineering competitions. I ask for each of you to listen intently to what your kids, nieces/nephews, or neighbors' kids are doing in their math or science classes. Maybe this is an opportunity to reach out to their teachers to speak. I've been told engineers are quite introverted, and you may not be comfortable presenting. And that's okay! We have some extroverts here in the St. Louis Section. We'll be more than happy to come and speak.

I am excited to meeting more of you, and hearing from you. I am excited to start this year, and I look forward to highlighting these opportunities I know we can start engaging in throughout this year.

Jordan Pettibone, P.E.

St. Louis Section 2020 Annual Awards Presentations



2020 ANNUAL AWARDS PRESENTATIONS SEPTEMBER 25, 2020



The St. Louis Section 2020 Annual Awards Presentations event was held September 25, 2020, online. The event was recorded and segments can be viewed at the links listed next to program parts below.

Presentation of Scholarships <https://youtu.be/k6ionDhkHbs>

Presentation of Awards <https://youtu.be/E3W1DxWZkv0>

Project of the Year Award <https://youtu.be/v57NCDi4THk>

ASCE and Region 7 Award Recipients <https://youtu.be/lmTGNZkgSE>

Installation of New Officers <https://youtu.be/L-3hVjHFvDw>

Section Scholarship Awards



Jessica Sullivan
Saint Louis University

Hometown

Chicago Suburbs

Interests/activities

Urbanization, exploring cities

Goals

Renewable energy and environmental engineering solutions



Benjamin Holland
Southern Illinois University Carbondale

Hometown

Heyworth, Illinois

Interests/activities

The outdoors, and activities such as fishing, hiking, canoeing, and camping, along with a developed fondness for basketball.

Goals

Passing the FE exam later this year, attaining my PE license further down the line, and working in the structural field in hopes of attaining my SE license at some point in my career.



Jacob Mette
Southern Illinois University Edwardsville

Hometown

Effingham, Illinois

Interests/activities

Disc golf
Snow skiing
Fishing

Goals

Participate in more public outreach
Pass PE/SE exam



Elizabeth Sanders
Missouri University of Science & Technology

Hometown
Lake Waukomis, Missouri

Interests/activities
I love listening to classic rock albums, learning trivia facts, and making postcards of the towns I visit.

Goals
Starting full-time in the construction industry as a Project Engineer upon graduation. I am currently studying to take my FE as well so I can earn my PE license. I also plan to one day visit all the National Parks!

SEI Scholarship Award



Alicia Streetar
Southern Illinois University Edwardsville

Hometown
Verona, WI.

Went to SIUE for undergrad degree & currently going to SIUE for grad school.
Currently working full time as a Junior Structural Engineer at Special Inspections & Design

I am working towards getting my PE license and eventually my SE license.

Plan to stay involved in the St. Louis chapters of ASCE and SEI throughout my career.

Interests include working out, spending time with family & friends, baking and watching movies.

Jeremiah King, P.E.

Jeremiah graduated from the University of Missouri-Rolla, now known as Missouri University of Science and Technology, in December 2006 with a Bachelors degree in Civil Engineering. Upon graduation, he began working at Brinkmann Constructors as a Project Engineer and was subsequently promoted to Project Manager. Jeremiah was licensed as a Professional Engineer in the State of Missouri in 2011.

Jeremiah believes in giving back to both his profession and institutions that have contributed to his growth. He currently serves as President of the Engineers' Club of St. Louis as well as the National Board of Directors of Sigma Tau Gamma Fraternity, Inc.

A few of his past roles has been as a Chapter Director for the St. Louis Chapter of MSPE, a Trustee for S&T's Board of Trustees, Chair of S&T's Corporate Development Council, and Area Director for the Miner Alumni Association.

Jeremiah and his wife, Maria, have been married for almost 12 years and met while in school at S&T where she graduated in 2005 with a Bachelors degree in Civil Engineering. Additionally, Maria is a licensed Professional Engineer as well.

They reside in Cottleville, MO with their three young sons aged 5, 6, and 9 where Jeremiah passes his time helping coach their sports teams and as Cubmaster of their Cub Scout Pack.



Elise Ibendahl, PE, PMP, F.ASCE

Elise has 23 years of water resources experience, specializing in hydraulic modeling and flood risk management in urban environments. She is Jacobs' Global Technology Lead for Flood Modeling and Planning and Jacobs' US North Solutions Leader for Water Resources. She specializes in flood modeling for highly urbanized areas, integrating traditional flood modeling techniques, green infrastructure planning, pluvial 2D flood routing, and subsurface pipe systems with riverine and coastal influences as boundary conditions. She is passionate about including social equity considerations in urban watershed planning projects, and is a member of ASCE's national MOSAIC (Members of Society Advancing an Inclusive Culture) committee.



She is active professionally as a Fellow of ASCE and trustee and scholarship committee member of the ASFPM Foundation. She is an active member of ASCE, SAME, MfSMA, and ASFPM, past chair of her local EWRI chapter, and a past ASCE Region VII Governor. She is currently an External Advisory Committee member for Washington University's Environmental Engineering department, and previously served in a similar role for St. Louis University.

Throughout her career she has performed the roles of project manager and/or subject matter expert for over 70 projects related to flood risk management for Federal, State, and Local entities. She has contributed to projects around the United States containing aspects of drainage and stormwater management studies, CSO long term control plan implementation, flood risk management studies, hazard mitigation, and design, stormwater master planning, green infrastructure solutions, and floodplain mapping and permitting. As the FEMA Region VII lead for Jacobs' CCPRS joint venture FEMA Public Assistance TAC III and IV contracts, she led ten task orders with total contract values over \$225M during a four-year period. She has a deep understanding FEMA regulatory mapping issues, FEMA hazard mitigation grant programs, and disaster recovery efforts.

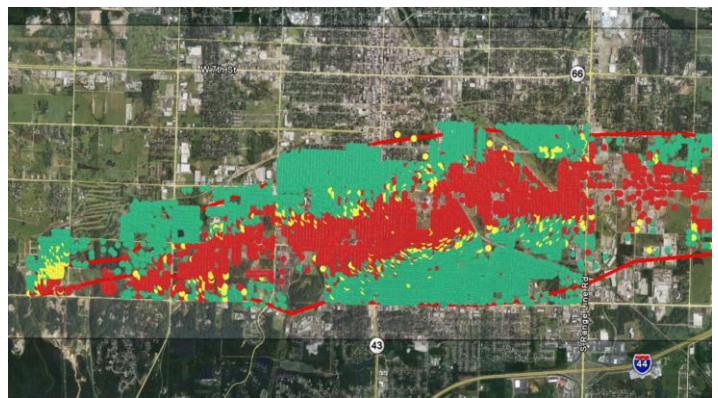
Ben Ross, PE, M.ASCE

- ASCE member since 1994
- B.S. in Civil Engineering 1994
- PE License in 4 states
- Missouri SAVE Coalition member since 1995
- Represents ASCE St. Louis Section on SAVE Board
- SAVE Board Chair 2015 to Present
- Contributed to several disaster related publications
- National Level Subject Matter Expert on Post-Disaster Building Safety Evaluation Response Planning
- Active participant as a Missouri representative in the Central United States Earthquake Consortium



Retained by the Applied Technology Council (ATC) to serve on the Project Review Panel for *Post-Disaster Building Safety Evaluation Guidance*. Developed a Leader Training Program for Post-Disaster Building Evaluation for Missouri that is being used as a template for a national model.

Invited to participate in the National Integration Center's (NIC) Building Safety Assessment Team Development Working Group



As both a member and the current chairman of SAVE, Ben has given significant effort to public awareness of the damaging effects an earthquake can cause in Missouri.

Joplin Tornado Response: Ben was the SAVE on-site coordinator for the post-event building evaluations.

***Project - Belleville Former MPG Site
Remediation of a former Manufactured Gas Plant Site***

Project Team

Project Owner: Ameren (Dave Palmer)
Property Owner: City of Belleville, Illinois
Contractor: PSC Industrial Outsourcing, LP (now HydroChemPSC) (Michael Crutcher)
Hydraulics Engineer: Kaskaskia Engineering Group, LLC (Matt Masterson)
Geotechnical Engineer: Terracon Consultants, Inc (Allen Minks)

Subcontractors:

Kaskaskia Engineering Group, LLC
Terracon Consultants, Inc.
Thouvenot, Wade and Moerchen, Inc
Schnabel Foundation Company (now Schnabel Geostructural Design and Construction)
GE Water (now Suez Water Technologies & Solutions)
Acrow Corporation of America

View the presentation with Questions and Answers at <https://youtu.be/v57NCDi4THk>

Dave Palmer

Manager, Remediation Projects, Ameren Environmental Strategy Department

Dave Palmer currently manages Ameren's large-scale remediation projects, including a portfolio of former manufactured gas plant (MGP) remediation projects.

Prior to his role in Environmental Strategy, Dave spent 2 years within Ameren's Project Management Oversight Group, providing leadership, guidance and support for project management and project controls personnel associated with the development, engineering, procurement, construction, commissioning, and close of projects greater than \$5M.

Palmer started at Ameren following over 16 years of project/portfolio/program management with practical experience working on diverse construction, geotechnical, and environmental projects. Palmer managed projects across the U.S., developing, planning and executing predominantly large-scale facility decommissioning and remediation projects.

A St. Louis native, Dave received a bachelor's degree in Geology from Missouri State University, followed by registration as a Professional Geologist, along with PMP and EVMP certifications.

Michael Crutcher PG, PE

Principal Environmental Engineer, HydroGeologic, Inc.

Mr. Michael Crutcher is a Senior Environmental Engineer with over 30 years of experience within the environmental consulting and environmental remediation industry. He has worked on a variety of environmentally impacted sites that have included leaking underground storage tank (LUST) properties, hazardous waste sites impacted with lead and heavy metals, sites impacted with chlorinated solvents and PCBs, and former manufactured gas plant (MGP) sites. Mr. Crutcher has taken impacted sites from their initial investigation through final remediation and receipt of No Further Remediation (NFR) letters. In the late 1990s, Mr. Crutcher became part of PSC Industrial Outsourcing's LP (PSC) MGP Group where he then worked on over 25 former MGP sites for several clients. Mr. Crutcher oversaw and managed the investigation, planning, and designing for the remediation of these MGP sites, many of them quite complex. He was able to successfully obtain NFR letters for multiple sites.

Mr. Crutcher is currently a Principal Environmental Engineer for HydroGeologic, Inc. (HGL) where he is currently working on designs for the remediation of impacted soils as part of the US Army Corps of Engineers Formerly Utilized Sites Remedial Action Program (FUSRAP) in North County St. Louis County, Missouri.



Mr. Crutcher is a 1984 graduate of the University of Missouri – Rolla (now Missouri University of Science & Technology) where he earned a Bachelor of Science Degree in Geological Engineering. After serving in the US Army for just over 4 years as a Petroleum Supply Officer, he enrolled in Vanderbilt University in Nashville, Tennessee where he earned a Master of Science Degree in Environmental and Water Resources Engineering in 1990. Mr. Crutcher is a Professional Geologist and a Professional Engineer licensed in both Missouri and Illinois.

Allen G. Minks, P.E.

Senior Consultant, Terracon Consultants, Inc.

Mr. Minks is a graduate of Missouri S&T, with BS (1981) and MS (1983) degrees, and spent one semester towards a PhD before leaving school to begin his geotechnical career. He previously served as Geotechnical Department Manager in Terracon's St. Louis, Missouri office before transitioning into a Senior Consultant position. He has over 37 years of experience in a wide variety of geotechnical studies, and has written reports for over 2,000 geotechnical projects with various geologic and subsurface conditions. He has worked on projects in 16 states and two foreign countries, and also spent two years working in product development for a ground improvement contractor. He has worked on several value engineering projects that resulted in construction savings between one hundred thousand and six million dollars.



Mr. Minks is a past president (2007-2008) of the St. Louis Section of the American Society of Civil Engineers (ASCE), and received the Professional Recognition Award in 2012. He also received the ASCE Edmund Friedman Professional Recognition Award in 2013, and the St. Louis Chapter of the Missouri Society of Professional Engineers (MSPE) Outstanding Professional Engineer in Private Practice Award in 2019. He is a member of the Missouri S&T Academy of Civil Engineers and currently serves on the Planning & Zoning Commission in Florissant, Missouri. Mr. Minks taught the geotechnical section of the MSPE PE Refresher course for over 15 years. He coached over 30 soccer, baseball, and hockey teams, and played hockey until he was 57 years old. He still rides a dirt bike and hunts and fishes whenever he can. He has been married to Connie for 38 years. They have three grown sons and are expecting their eighth grandchild in December.

Matt Masterson, P.E.

Lead of Geotechnical Engineering, Kaskaskia Engineering Group, LLC

Matt Masterson joined Kaskaskia Engineering Group, LLC (KEG) in February of 2009 and has over 24 years of experience in a wide variety of geotechnical studies ranging from soils and foundation analysis, design, and construction monitoring to MSE retaining wall and reinforced soil slope design, analysis, and construction. His responsibilities have included project initiation; proposals; project management; geotechnical analysis and design; geotechnical reports; construction monitoring reports; footing and foundation excavation oversight and reporting; deep foundation design; analysis and field inspection; residential foundation distress observation, study, and reporting; slope failure investigation and analysis; civil surveying; drafting; and global stability analysis. Mr. Masterson has performed analyses and written reports with respect to various geologic and subsurface conditions throughout the Midwest. In addition, he has developed design plans on over 875,000 square feet of MSE retaining wall and slope projects.



ASCE 2020 AWARD RECIPIENTS

2020 FINALIST - RICHARD J. SCRANTON OUTSTANDING COMMUNITY SERVICE AWARD

SAINT LOUIS UNIVERSITY ASCE STUDENT CHAPTER

2020 THOMAS FITCH ROWLAND PRIZE

DR. ISLAM EL-ADAWAY PH.D., P.E., F.ASCE

ASCE REGION 7 2020 AWARD RECIPIENTS

OUTSTANDING FACULTY/PRACTITIONER ADVISOR

DR. JOEL BURKEN, PHD, PE, BCEE, F.AEESP

LIFETIME ACHIEVEMENT AWARD

GENE L. ROVAK, PE, F. ASCE

W. GENE CORLEY AWARD

RANDALL P. BERNHARDT, PE, SE

Mr. Bernhardt has over 40 years of experience in the field of structural engineering and specializes in structural investigation and inspection of buildings, bridges, and industrial structures. He has extensive experience in the investigation, analysis, and evaluation of structural damage from wind, tornados, vehicular collision, fire, explosion, water focusing, construction defects and design defects focusing on forensic investigations and testimony for litigation and insurance claims. Mr. Bernhardt earned his B.S. degree in Engineering from Southern Illinois University and his M.S. degree in Civil Engineering from Kansas State University. He is a licensed professional engineer in fifteen states and a licensed structural engineer in two states.

He is currently:

- Member of the Structural Engineering Institute Board of Governors
- Chair of the Structural Engineering Licensure Coalition
- ExCom chair of the Business and Professional Activities Division of SEI
- Member of the Professional Activities Committee
- Member of the Committee on Forensic Investigations of the Forensic Engineering Division of ASCE
- Member of the Planning Committee for the Annual Joint SEI-GI Conference in St. Louis
- Member of the Board of Directors, Greater St. Louis Claims Organization
- Member of the American Concrete Institute, International Code Council, Engineers Club of St. Louis, and Fenestration and Glazing Industry Alliance

He is also:

- Past chair of the Professional Activities Committee of SEI
- Past chair of the St. Louis Chapter of SEI
- Past SEI Liaison to the NCEES Professional Organization Liaison Council
- Past member of the SEI Vision for the Future Update Committee

He has been active in writing papers and making presentations in support of structural engineering licensure and forensic engineering. He is also a member of the Engineers Club of St. Louis and enjoys golfing in their golf league. He is active in his church, enjoys acrylic painting, and enjoys spending time with his wife, kids, and grandchildren.



Open Committee Positions

Communications Co-Chair - The Committee's primary goal is to communicate to all local members news of past, present, and future activities and programs for the purpose of stimulating greater interest and participation in section affairs. The Co-Chair is expected to work closely with the president and chairmen of other committees to obtain information of vital interest to the membership. Correct and timely information should be obtained from the program committee regarding forthcoming meetings. Valuable news will also be found in the Section Leader, a regular publication issued from ASCE headquarters. An informal but regular system of contacts or reporters is an essential ingredient to the collection of interesting news.

EWRI Monthly Speaker Series Event



EWRI ST. LOUIS MONTHLY SPEAKER SERIES EVENT

The St. Louis Section of EWRI is pleased to announce our monthly webinar **on Thursday, October 15, 2020 at 11:30 am-12:30 pm Central Time.**

This presentation will be broadcast live over a webinar. Registration is free to ASCE members. **Advance registration is required by Noon, Monday, October 12, 2020.** Please register online in advance at the following link:

<https://docs.google.com/forms/d/e/1FAIpQLSett23vrZ79L3B3VtnV5nxypqgVBOXiwBalpaOJF2ZFROB4ng/viewform>

Registrants will receive detailed login and dial-in information prior to the event.

CORONAVIRUS WASTEWATER SAMPLING PROJECT

COVID-19 is new, but using wastewater for tracking disease, anticipating outbreaks, and understanding extent is not. Wastewater testing has proven useful in tracking diseases such as polio and norovirus. Now Missouri DNR, Missouri DHSS and University of Missouri are cooperating to test and evaluate sewage samples from over 70 sites. The data generated from sewage testing will be useful for understanding the distribution of SARS-CoV-2 in Missouri and monitoring long-term trends for indication of reemergence.

SPEAKERS

Chris Wieberg, Missouri Department of Natural Resources Chris Wieberg has worked for the Missouri DNR since 2004, and specifically with the Water Protection Program in various capacities for the last seven years. Appointed Director of the Water Protection Program in August 2017, Chris began his career with the DNR as a Soil and Water District Coordinator followed by Unit Chief with the Wellhead Protection Section prior to joining the Water Protection Program. Chris graduated from Lincoln University and holds a degree in agriculture. In his free time, Chris enjoys spending time with his family, hunting, fishing, and raising cattle on his family farm in Maries County.

Jeff Wenzel, Missouri Department of Health and Senior Services Jeff Wenzel is the Chief for the Bureau of Environmental Epidemiology within the Missouri Department of Health and Senior Services. Jeff has worked for the Missouri DHSS for 18 years. Jeff received his bachelor's degree in Fisheries and Wildlife Sciences from the University of Missouri-Columbia.

Marc Johnson, University of Missouri Marc Johnson is a Professor of Molecular Microbiology and Immunology at the University of Missouri-School of Medicine. Marc received his bachelor's degree in Biology from Washington University in St Louis, his PhD in Molecular and Cellular Biology from Oregon State University specializing in virology and completed his postdoc at Cornell University in Retrovirology. He joined the faculty at MU in 2005 and until very recently, his lab was focused on studying HIV-1 virus-host interactions.

Thank you to our joint seminar sponsor, **EDM Incorporated!**

Please contact **Len Madalon** (ljm@edm-inc.com) with any questions, if you are interested in presenting, or have an idea for a topic.



**ENVIRONMENTAL &
WATER RESOURCES
INSTITUTE**
St. Louis Chapter

EWRI of ASCE - St. Louis Chapter

2020 Environmental & Water Resources Spring Symposium/Workshop

WATER, WATER, EVERYWHERE

You are invited to attend a full-day educational symposium/workshop for professional development to learn about water-related technical topics in our region, and to develop skills in hydrological and hydraulic analysis with HEC-RAS and HEC-HMS

Virtual Webex Symposium

Who should attend: Water resources, environmental, hydraulic, and hydrological engineers; water resources planners, municipal, public works and utility managers, hydrologists, and students

SAVE THE DATE: Friday, November 6, 2020

Technical Program 8AM to 4PM
(details forthcoming)

6 Professional Development Hours
for professional licensure requirements

Registration information: forthcoming

For further information, please contact:

Dr. Azadeh Bloorchian
Spring Symposium/Workshop Chair
ASCE-EWRI St. Louis Chapter
636-343-5852 (work)
azadeh.bloorchian@stantec.com



ENVIRONMENTAL &
WATER RESOURCES
INSTITUTE
St. Louis Chapter

Missouri Society of Professional Engineers (MSPE) and American Society of Civil Engineers (ASCE) November Joint Luncheon Tuesday, November 10, 2020

BOOTS ON THE GROUND A LOOK AT MSD PROJECT DELIVERY IN A GREEN AGE

Two presentations will be made centering upon how the Metropolitan St. Louis Sewer District (MSD) delivers a variety of construction projects to remain in compliance with current regulations.

Abstracts:

CSO Volume Reduction Green Infrastructure Programs Overview: In 2011, MSD completed a Combined Sewer Overflow Long-Term Control Plan (CSO LTCP), which was formalized in a Consent Decree (CD) with the U.S. Environmental Protection Agency (EPA) in April, 2012. The CSO LTCP includes a \$100 million green infrastructure (GI) program for the portions of the city that flow directly to the Mississippi River outfalls. In 2015, an amendment to the CD added an additional \$20 million for the combined sewer portions of the River des Peres watershed. This presentation will give an overview of the four CSO Volume Reduction Green Infrastructure Programs, as well as how you can participate: Small Grants, Large Grants, MSD Direct Projects, and the Green City Coalition.

Getting it Done: Unique Bidding Alternatives in a Traditional Bidding Environment: This presentation will discuss different bidding methods MSD utilizes. This will include discussion of everything from Small Infrastructure Repair projects to large Immediate Needs, as well successes had with the Small Contractor Program.

About the Presenters:

Kaleena Menke, PE is a Civil Engineer with the Metropolitan St. Louis Sewer District (MSD). She has a BS in Civil Engineering from the University of Colorado Denver. Kaleena is a licensed Professional Engineer in Illinois and Missouri. At MSD, Kaleena manages the Green Infrastructure Program within the Combined Sewer portion of the District for stormwater quantity management. Prior to her time at MSD, she worked as a civil site designer in private consulting. When she's not working, she can be found biking through the streets of St. Louis. Although she's from Colorado, Kaleena has lived in the area for over six years now and is proudly calling St. Louis her home.

Steve Adams graduated from the University of Missouri – Columbia with a degree in Civil Engineering in 2003. He worked in both private and public settings before joining MSD in 2009. At MSD he currently works in the Project Design group where he designs solutions and prepares construction documents for a variety of projects. These include storm and sanitary sewers, pump stations, creek bank stabilization, and green infrastructure projects.

Time, Date

November 10, 2020

Registration

Register Now! (try the link or cut/paste the below to your browser)



**GEO-
INSTITUTE**
St. Louis Chapter



**STRUCTURAL
ENGINEERING
INSTITUTE**
St. Louis Chapter

Structural and Geo-Confluence

2020 ONLINE EVENT

November 5, 6, 12, and 13

11:00 AM to 1:00 PM each day

Registration is open for the fifth annual Structural and Geo-Confluence, hosted by the St. Louis Chapters of SEI and GI. This four-day ONLINE conference is open to all. Registrants will earn up to 2 PDH per day, 8 PDH total.

Preliminary agenda includes:

- *The Engineering Design of the St. Louis City SC Stadium* – Matt Breidenthal, HOK
- *Lessons Learned from Litigation Caused by Expansive Clays* – Steve Wendland, Kleinfelder, Inc.
- *San Francisco's Sinking Millennium Tower* – Ron Hamburger, Simpson Gumpertz & Heger
- *Seismic Retrofit of Merchant's Bridge* – Kevin Eisenbeis, Burns & McDonnell
- *Observing and Controlling Ground Behavior during Tunneling* – Ed Cording, University of Illinois, 2020 Terzaghi Lecturer
- *Intro to Blasting: Impact of Geotechnical Information and Blasting Techniques on Cost and Results* – William Scott and Jereme Caron, Maine Drilling & Blasting
- *Incorporation of Thunderstorm and Tornado Loading in Wind Load Codes and Standards* – Frank Lombardo, University of Illinois
- *Underpinning Prairie: Micropiles Support Prairie Du Sac Dam* – Brian Barkauskas, Nicholson Construction Company
- Date-specific agenda will be published on the registration page at <https://conta.cc/2GBOFpj>

Registration Class	Rate
Professional	\$25 per day OR \$75 for all 4 days
Full-time Students	\$20, all 4 days
Virtual Exhibitor	\$250, includes 1 registration for all 4 days

Virtual exhibitors, please contact Lyle Simonton (lsimonton@subsurfaceconstructors.com) to discuss these benefits.

Please register at <https://conta.cc/2GBOFpj> (case sensitive)

Individual registration is required for this online event, for ASCE's PDH verification records. No group registrations.

Login information for this online event will be provided to registrants the day before each session, using the email address entered during registration.

Registration may be transferred to another person by advanced email notice to Stephanie Spann (sspann@davidmason.com) and Greg Hempen (hempen69@sbcglobal.com).

Refunds must be requested before Wednesday, November 4, 2020. All refunds will be subject to a 15 percent cancellation fee.

Volunteer Opportunity through Community Engineering Corps (CE Corps)

CECorps is a program that was started in 2014 by an alliance between ASCE, the American Water Works Association (AWWA) and Engineers Without Borders USA (EWB-USA). CECorps advances local infrastructure solutions by providing pro-bono engineering services in partnership with communities that need it most. Members of these three organizations can volunteer their time and expertise to assist communities that do not have the resources to access engineering services in a traditional manner.

Visit https://www.asce.org/community_engineering_corps/ for more information.

There is a CECorps project team in Hartford, IL that is in need of a Responsible Engineer in Charge (Civil PE licensed in Illinois). The project team is currently made up of EWB-USA members. The team has done one site visit and is holding virtual team meetings.

The project involves utility planning and permitting for the construction of a new church building in Hartford, IL. The Church will be utilizing a pre-fabricated steel structure for the new church. The placement of the church will be on a plot of formerly farmed land, which does not currently have water or sanitation services from the street to the building site. Current permitting or planning for these utilities has not yet been done. On the nearest access road to the site for the new build, there are municipal water and sewer services, but no outreach has yet been conducted to those municipalities. A project team will be conducting any necessary design as well as assisting with permitting for construction. In addition, the team may examine potential alternatives due to the fact that tie-in to the sewer system would necessitate digging up a town-owned roadway and thus be potentially cost prohibitive. The church is a nonprofit church group located within the town of Hartford, IL., and has been a part of the community for over 90 years.

Learn what the [Responsible Engineer in Charge Role](#) entails. If interested in volunteering, email Melissa Prelewicz, ASCE's CECorps staff liaison, at mprelewicz@asce.org.



VIRTUAL FALL 2020 FUNDAMENTALS OF ENGINEERING (FE) REVIEW SESSIONS AT SIUE*

<u>Date</u>	<u>Subject</u>	<u>Instructor</u>	<u>Time</u>	<u>Place</u>
Wed. 10/07/20	Math/Statistics	Dr. Chew	10 – 11:30 AM	Zoom
Mon. 10/12/20	Surveying/Construction	Prof. Sherrill	12 – 1:30 PM	Zoom
Thurs. 10/15/20	Structural Analysis	Dr. Cross	4:30 – 5:50 PM	Zoom
Tues. 10/20/20	Dynamics	Dr. Shavezipur	4:30 – 5:50 PM	Zoom
Thurs. 10/22/20	Statics	Dr. Fries	4:30 – 5:50 PM	Zoom
Tues. 10/27/20	Engineering Economics	Dr. Eneyo	4:30 – 5:50 PM	Zoom
Thurs. 10/29/20	Fluid Mechanics	Dr. Denn	4:30 – 5:50 PM	Zoom
Mon. 11/02/20	Geotechnical Engineering	Dr. Osouli	12 – 1:30 PM	Zoom
Wed. 11/04/20	Transportation Engineering	Dr. Qi	4:30 – 5:50 PM	Zoom
Thurs. 11/05/20	Environmental Engineering	Dr. Zhou	4:30 – 5:50 PM	Zoom
Tues. 11/10/20	Engineering Materials	Dr. Huang	4:30 – 5:50 PM	Zoom
Thurs. 11/12/20	Mechanics of Solids	Dr. Panahshahi	4:30 – 5:50 PM	Zoom
Tues. 11/17/20	Structural Design: Concrete	Dr. Panahshahi	4:30 – 5:50 PM	Zoom
Thurs. 11/19/20	Hydraulic/Hydrologic Systems	Dr. Benjankar	4:30 – 5:50 PM	Zoom

* ALL REVIEW SESSIONS ARE TAUGHT BY SIUE FACULTY MEMBERS.

THE SESSIONS ARE FREE FOR SIUE ENGINEERING STUDENTS WHERE EMAILS WITH THE ZOOM LINKS FOR THE SESSIONS WILL BE EMAILED TO THEM. NO REGISTRATION IS NEEDED.

FOR NON-SIUE STUDENTS AND PRACTICING ENGINEERS, EACH SESSION WILL COST \$10 PAYABLE TO SIUE CHI EPSILON. TO REGISTER AND OBTAIN THE ZOOM MEETING INFORMATION FOR THE SESSIONS(S) YOU ARE INTERESTED IN ATTENDING PLEASE CONTACT MS. ASHLEY SPAIN, CHI EPSILON PRESIDENT AT ASPAIN@SIUE.EDU, AT LEAST 24 HOURS IN ADVANCE. AN INVOICE WILL BE SENT TO YOU ONCE THE SESSIONS ARE COMPLETE.

FOR MORE INFORMATION PLEASE CONTACT PROF. PANAHSNAHI AT NPANAHS@SIUE.EDU





St. Louis CNR's 2020 Women in Construction Awards

DEADLINE - SEPTEMBER 30th

GO TO stlouiscnr.com NOW!

**Help Us Salute
Outstanding Women
Who Design, Construct, Engineer, Create &
Work to Build the Future of St. Louis...**

**NOMINATE THOSE WHO INSPIRE YOU
TODAY!**

Who Should Be Nominated?

Outstanding women contributing to our community in the following areas:

- Construction Management
- Subcontracting
- Construction Industry Company Ownership
- Professional Service Providers for A/E/C Industry
- Construction Industry Association Leadership (Professionals and Volunteers)
- General Contracting
- Architecture
- Engineering
- Marketing Professionals

Our Judges

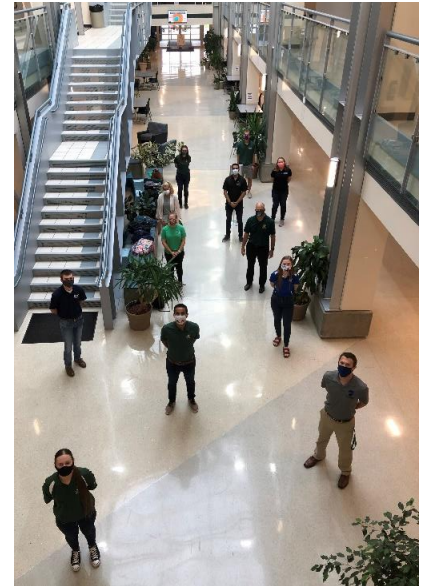


Sandra Porter Marks Clayco	Angelica Gutierrez Great Rivers Greenway	Paola Badea JEMA	Tammy Dotson Negwer Materials	Kelly Jackson SLCC	Nicole Adewale ABNA Engineering	Nora Bresnahan Castle Contracting	Kiran Satwani Mueller Prost
-------------------------------	---	---------------------	----------------------------------	-----------------------	------------------------------------	--------------------------------------	--------------------------------

**Winners' stories will be featured in the St. Louis CNR
November/December 2020 print edition.**

As we hit the fall 2020 session at Missouri S&T this is certainly a time of change, disruption, and adaptation for us all. The S&T students have a 150 year legacy of setting a path to be leaders in the field and adaptable to situations. This fall has been a continuation of that legacy. With roughly 50% of our education on line, we are making our way through and the total campus cases is still under 100 for the entire S&T campus. We all hope the numbers stay at bay.

Our student chapter certainly hit the ground running this fall, with picking up with meetings and service activities. Picture of the student officers maintaining our distancing in Butler Carlton Hall and hosting speakers from across the US virtually, our first meeting had over 65 members in virtual attendance.



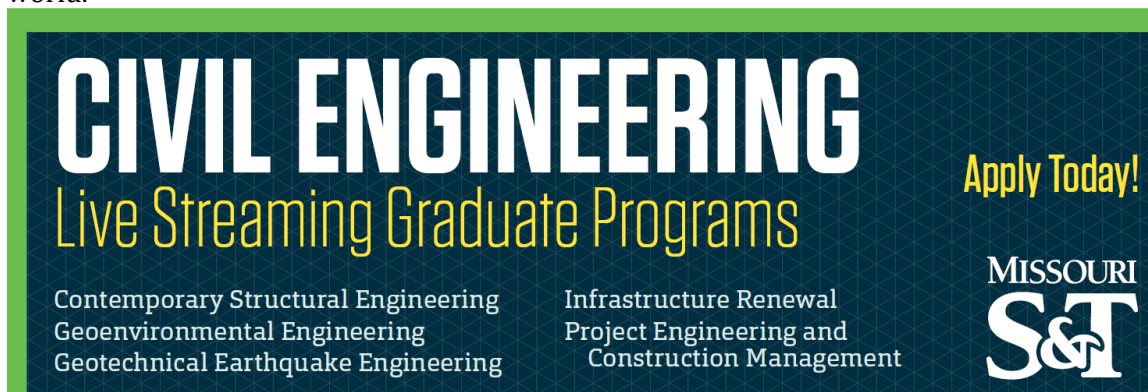
While the COVID pandemic is without question impacting all we do, the entire Civil, Architectural and Environmental Engineering Department is looking to keep moving forward. The Fall 2020 career fair was entirely on-line and was considered to be a success for sure. S&T had over 320 companies participating and looking for new Miners to join their companies. CArEE programs had a great turn out with over 120 companies searching CArEE graduates and interns. Prior to the Career Fair, the CArEE night to network connected over 80 students and employers in discussions on career advancement and tips and tricks for the virtual world job hunt.

We have completed the construction project on the Clayco-Advanced Construction Materials Laboratory (ACML). The \$7.5 million addition to the Butler Carlton Civil Engineering Hall that will provide 16,000 ft² of additional teaching and research space for our students, faculty and collaborators. Support from Clayco, ARCO, Concrete Strategies, The Sunderland Foundation, Nucor Steel, and many proud Miner Alumni made the project possible. The dedication of the new facility will be October 16th at 4:00, Contact CArE@mst.edu for details on the event and directions to join online.

We are also expanding our programs, including online courses to join our existing distance education degree programs. We have new certificate programs starting in 2021 include:

- Advanced Materials for Sustainable Infrastructure.
- Building Systems Engineering.
- Surface Water Resources.

The future is shrouded in questions and uncertainty, but we are resilient and fully back on campus in Rolla MO this fall, as well as projecting programs through our online programs. Our full listing of opportunities is at: <https://distance.mst.edu/care/>. We are always looking to provide premier education for our beloved profession. Whatever the future holds, our students and alumni will be there to help shape the future of our profession and our world.



CIVIL ENGINEERING
Live Streaming Graduate Programs

Apply Today!

MISSOURI
S&T

Contemporary Structural Engineering
Geoenvironmental Engineering
Geotechnical Earthquake Engineering

Infrastructure Renewal
Project Engineering and
Construction Management

Are you a **Passionate, Highly-Motivated**
Geotechnical Engineer?



Do you want flexibility in your job?
Do you want the ability to be innovative?
Do you want great benefits?
Do you have these qualifications?

- **BS/MS degree in Geotechnical Engineering**
- **Passed FE Exam and eligible for PE exam (or already obtained PE)**
- **Excellent written and verbal communication skills**

If so, we want to talk to....YOU!****

To apply please visit our website at...

www.sciengineering.com/careers

NOW HIRING IN MISSOURI, ILLINOIS, COLORADO AND TEXAS

Mechanical Engineering Instructor Needed for Missouri Society of Professional Engineers (MSPE) PE Refresher Course

MSPE has been giving PE refresher courses to help engineers prepare for the PE licensee exam for the past more than 20 years. MSPE currently has an opening for Mechanical Engineering instructors.

Eligible candidate is required to be a Missouri registered professional engineer (P.E.) in Mechanical Engineering with at least 5 years of related working experience. The instructor will give review courses to help participants pass the professional engineer (P.E.) license exam, and the covered disciplines includes HVAC and Refrigeration, Thermal and Fluid Systems, Machine Design and Materials. Two categories of instructors are needed:

(1) The instructor is required to be proficient in all three areas and familiar with the P.E. exam and can adjust the class content flexibly based on the student registration and their desired testing disciplines.

(2) The instructor is required to be proficient in one of the three areas and familiar with the P.E. exam and will either work with the other instructors for the mechanical classes (2-3 sessions per instructor) or work alone on the specialized area (7 sessions) based on the student registration and their desired testing disciplines

The classes are scheduled from January to March and includes 7 separate sessions that are held from 8 am to noon on Saturdays at St. Charles Community College (Address: 4601 Mid Rivers Mall Dr. Cottleville, MO). For details regarding the class and payment, please contact Lisa Cheng at lisa.cheng@hdrinc.com or call at 919-749-5998.

Note: Class might be temporarily switched to be online due to the ongoing Covid situation.

Submit items to the newsletter...

Please try to get all announcements for placement in the newsletter to the Newsletter Editor by the 20th of the month prior to publication. Items may be sent via e-mail to Brent Vaughn (ASCE newsletter editor) at brent.vaughn.asce@gmail.com. **MS Word files are the preferred file type.** PDF files are also acceptable but may not look as sharp when inserted into the newsletter and hyperlinks will probably not carry through to the final version. For multiple page announcements, please consider providing a single-page flyer, concisely worded, with links provided to ancillary pages such as registration forms or other attachments. Also, please clearly include in the email subject line a concise title for the announcement and desired month(s) of publication.

Most news items will be available on the Section's Web Page, which can be reached via the link on ASCE National Website (www.asce.org). Click on "Geographical and International Units" to link to the Section or go directly to our page at: <http://sections.asce.org/st-louis/>. The Section's Website Editor is Jeff Smith e-mail: JESmith@HNTB.com or via feedback directly from our website.

For more information and updates see our Web Page: <http://sections.asce.org/st-louis/>

This newsletter will be sent to all Section members via e-mail. Delivery of the newsletter hardcopy by First Class mail will be made upon request. Members have the responsibility to keep their contact information in the ASCE national database up to date. Please note that the St. Louis Section is only provided with members' PRIMARY information on file at the Society level. To ensure that we can contact you, please edit your PRIMARY information to contain the information where you would like the section to contact you and how you would like your information to appear in our annual roster.

Please be sure to keep your PRIMARY contact information up-to-date by contacting ASCE at <http://www.asce.org>, or call 800-548-ASCE (2723).



**ASCE – St. Louis Section
c/o The Engineering Center
4359 Lindell Blvd. St. Louis, MO 63108**